



Flat face

Flat face is easy to clean, helping to reduce the inclusion of contamination in the hydraulic circuit

+ Male & female couplings

Equipped with a special valve to connect & disconnect the hydraulic lines. Special couplings available for water cooling or pneumatic lines. The main purpose of the couplings is to convey fluid, hydraulic signals or energy thru the lines and automatically shut off without spillage during disconnection.



Electrical connector

Electrical connector option
Possible to integrate an electrical connector with hydraulic couplings in the same multiconnection. It is a good complement to Stucchi multiconnection adding the possibility to conduct low voltage signal for solenoid valve, sensor or other electronic Customer devices.

Fixed plate

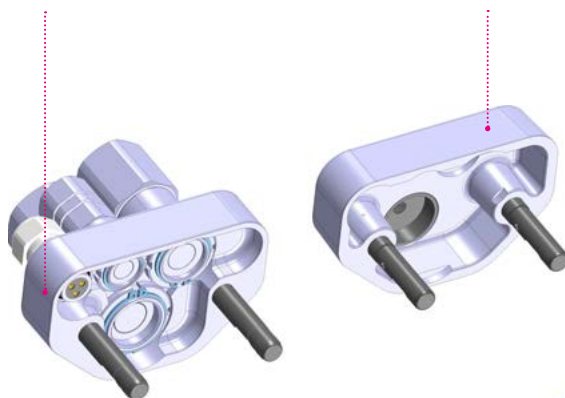
It is called "fixed" because is normally installed on the machine, thanks to the bolting holes to assemble the body on the frame of the Customer equipment. Fixed multiconnection is normally supplied with male couplings installed

Mobile plate

It is called "mobile" because is normally installed on the attachment (it is the part with the locking pins). The couplings of the mobile parts are connected to the flexible hose bundle of the attachment, so the mobile part of the Customer equipment.

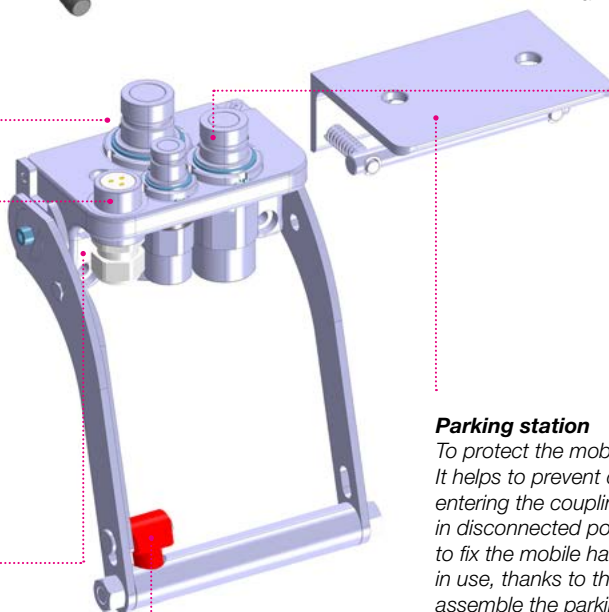
Cover for fixed multiconnection

Reinforced design made in Aluminum in order to resist to weather conditions. It helps to prevent dirt, pollutants & contamination entering the couplings of fixed multiconnection in disconnected position.



Male residual pressure eliminator

Internal pressure release valve system allows an easy connection with high internal residual pressure

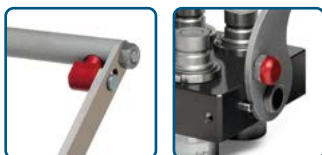


Parking station

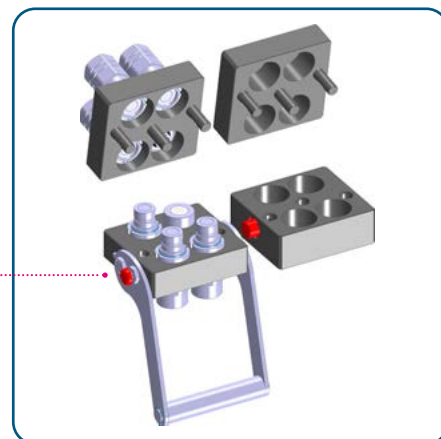
To protect the mobile half when disconnected. It helps to prevent dirt, pollutants & contamination entering the couplings of mobile multiconnection in disconnected position. In addition to that, it helps to fix the mobile half with his hose bundle when not in use, thanks to the fixing holes making possible to assemble the parking station on the attachment frame

Levers & Locking

Ergonomic lever for easy connection/disconnection with Safety lock system avoids accidental disconnection



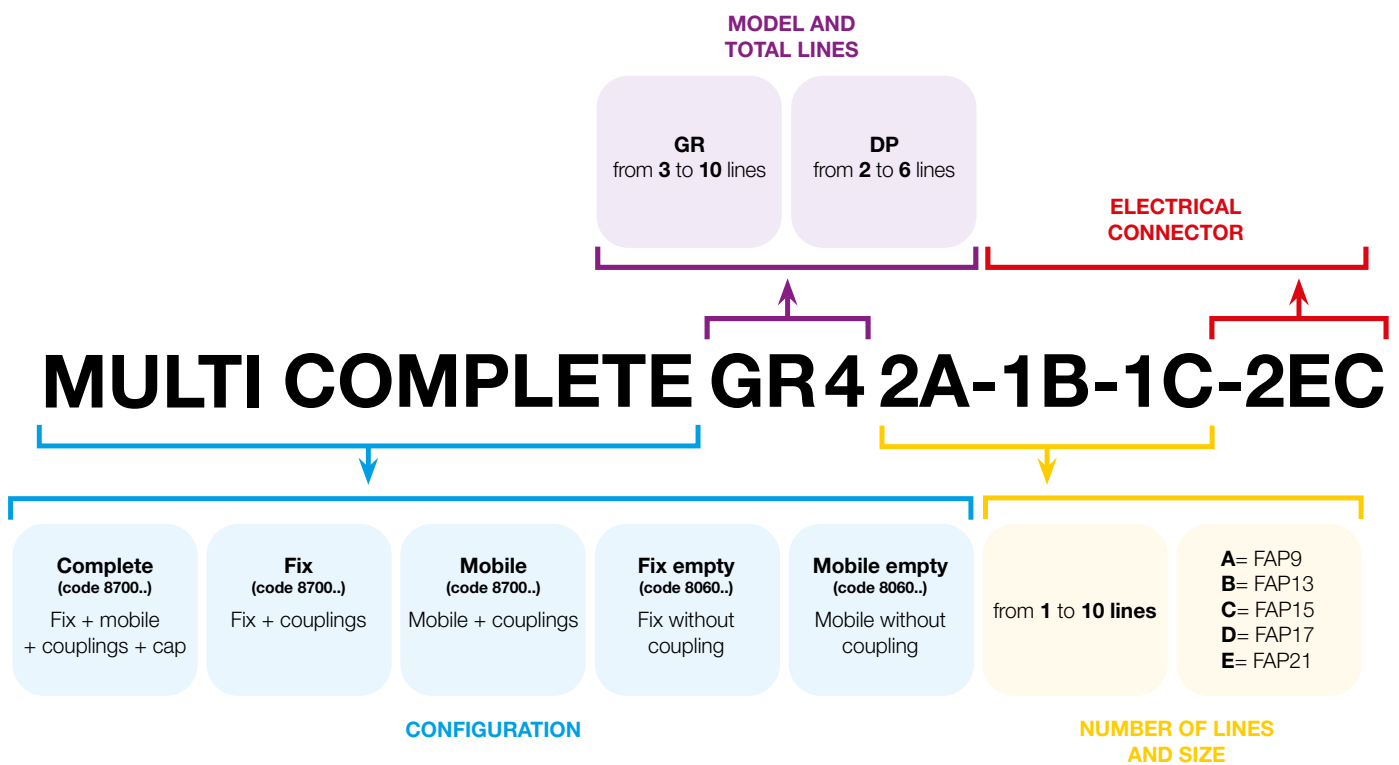
Same glossary for DP



DP - GR: multi description



The stucchi multicoupling description can help you to easily know the characteristics of a multicoupling: configuration and model, number of lines and size, presence of electrical connectors. See the example below...



DP - GR: multi map



New name	Family	Total Lines	FAP9 (A)	FAP13 (B)	FAP15 (C)	FAP17 (D)	FAP21 (E)	EC*	Previous description	Page	
Body size			3/8"	1/2"	5/8"	3/4"	1"	3/8" 1/2"			
Max flow suggested (l/min)			46	90	148	200	378				
Mostly used adaptor (main alternative thread)			3/8" (1/2")	1/2" (3/4")	3/4"	1" (3/4")	1-1/4" (1")				
DP2 2A-1EC	DP	2	2	A				1	DP2-9ZN	30	
DP2 2A-2EC V04	DP	2	2	A				2	DP2-9L	32	
DP2 2B-1EC	DP	2			2			1	DP2-13ZN	34	
DP2 2B-2EC V04	DP	2			2			2	DP2-13L	36	
DP2 2C	DP	2				2			DP2-15	38	
DP2 2D	DP	2					2		DP2-17ZN	40	
DP2 1A-1B	DP	2	1	D	1				DPT2ZN	42	
DP3 1A-1B-1EC	DP	3	1	D	1			1**	DPT3ZN	44	
DP3 1A-2C-1EC V04	DP	3	1	D		2		1		46	
DP3 1C-2E	DP	3				1	2		DP3GE	48	
DP3 2A-1EC	DP	3	2	A				1**	DPJ3ZN	50	
DP4 4A-2EC	DP	4	4	A				2	DP4-9ZN	52	
DP4 4B-2EC	DP	4			4				2	DP4-13ZN	54
DP4 4B-1EC V01	DP	4			4			1		56	
DP6 2A-4D-2EC	DP	6	2	A			4	2	DP6AD	58	
GR3 3A-1EC	GR	3	3	A				1	GR3-9ZN	60	
GR3 3B-1EC	GR	3			3			1	GR3-13ZN	62	
GR3 1A-2E-1EC	GR	3	1	D				2	GRK3ZN	64	
GR3 2B-1C-2EC	GR	3			2	1		2	GRI3	66	
GR4 2A-1B-1C-2EC	GR	4	2	D	1	1		2	GRI4SBZN	68	
GR4 2A-2B-2EC	GR	4	2	D	2			2	GRB4ZN	70	
GR4 2A-1B-1D-2EC	GR	4	2	D	1		1	2	GR4MRZN	72	
GR4 2A-1C-1D-2EC	GR	4	2	D		1	1	2	GRI4ZN	74	
GR4 2A-2C-2EC	GR	4	2	D		2		2	GRI4TBZN	76	
GR5 1A-1B-1C-2D-1EC	GR	5	1	D	1	1	2	1	GRP6ZN	78	
GR5 2B-3D-2EC	GR	5			2		3	2	GR5AAZN	80	
GR5 3A-1D-1E-2EC	GR	5	3	D			1	2	GRD5ZN	82	
GR5 2B-2C-1E-2EC	GR	5			2	2		1	2	GRZ5ZN	84
GR5 5C	GR	5				5				GR5-15ZN	86
GR6 6A-2EC	GR	6	6	D				2	GR6-9ZN	88	
GR6 4A-2B-2EC	GR	6	4	D	2			2	GRT6ZN	90	
GR6 4B-2D-4EC	GR	6			4		2	4	GR6ABZN	92	
GR6 2A-2B-2C-2EC	GR	6	2	D	2	2		2	GRM6MCZN	94	
GR6 6B-2EC	GR	6			6			2	GR6-13ZN	96	
GR6 3A-1B-1C-1D-2EC	GR	6	3	D	1	1	1	2	GRC6ZN	98	
GR6 2A-2C-2D-2EC	GR	6	2	D		2	2	2	GRM6ZN	100	
GR6 2A-2B-1D-1E-2EC	GR	6	2	D	2		1	2	GRU6ZN	102	
GR6 2B-4D-2EC	GR	6			2		4	2	GR6LLZN	104	
GR6 2A-4C-2EC	GR	6	2	D		4		2	GRM6ALZN	106	
GR6 2A-1B-2D-1E-3EC	GR	6	2	D	1		2	1	2	GR6AF	108
GR7 4A-3B-4EC	GR	7	4	D	3			4	GR7ABZN	110	
GR7 4A-3B-4EC V01	GR	7	4	D	3			4	GR7ABZNL	110	
GRHP7 7A-4EC	GR	7	4	D				4	GR7ACZN	112	
			3	HP							
GR7 4A-1B-2D-4EC	GR	7	4	D	1		2	4	GR7AAZN	114	
GR8 6A-2B-6EC	GR	8	6	D	2			6	GR8ABZN	116	
GR8 7A-1D-7EC	GR	8	7	D			1	7	GR8AAZN	118	
GR10 10A-2EC	GR	10	10	D				2	GR10-9LCZN	120	
GR10 10A-2EC V01	GR	10	10	D				2	GR10-9ZNSD	120	
GR10 10A-2EC V03	GR	10	10	D				2	GR10-9ZN	120	
GR10 10B-2EC	GR	10			10			2	GR10-13ZN	122	

* Electrical Connector instead of hydraulic line

** this line is only dedicated for EC

FAP9 "A" and "D": the version is depending on the type of multicoupling in use.

Step A

Define the type of multicoupling you need

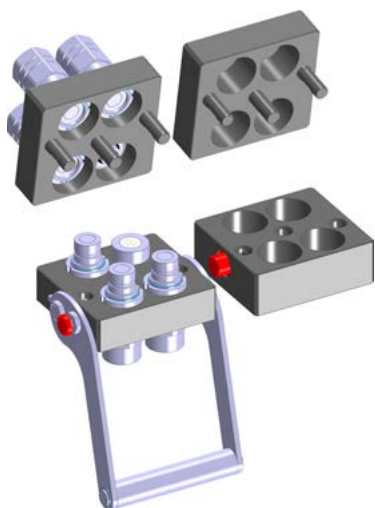
Step B

Choose configuration of the multicoupling

Step C

Set up each line

A. DEFINE THE TYPE OF MULTICOUPLING YOU NEED



DP

Features

- Hydraulic oil power line
- Operating pressure up to 350 bar
- Dis/connection under pressure
- Up to 6 lines
- Body in aluminium with special treatment
- Locking on the side



GR

Features

- Hydraulic oil power line
- Operating pressure up to 350 bar
- Dis/connection under pressure
- Up to 10 lines
- Body in brass with nickel plating
- Locking on the lever

B. CHOOSE CONFIGURATION OF THE MULTICOUPLING



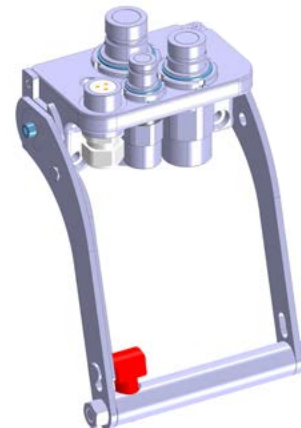
1 Dimension your couplings and EC

Coupling size choice is based on:

- Flow/Pressure drop
- Operating pressure (check on the FAP-ZN, FAP-HP or FAQ serie datasheet)
- Hose/Port size

2 Define your configuration = List your couplings & EC

Eg: 2 x size 3/8" + 1 x size 1/2" + 1 EC



3 Choose the multicoupling for your configuration

Use the overview table 'Multi Description' to choose the multicoupling for your listing/configuration

Advice:

1. You can increase the size of some couplings to have a better match with an existing configuration.
2. In case of too many lines, you may need to divide your configuration in different plates.

4 Verify the resistance of your multicoupling

Use 'Max. Multicoupling Resistance' provided on the single datasheet to be sure that the multicoupling will be able to handle the pressure once connected.

See page 27 for details.

DP - GR: how to choose



C. SETUP EACH LINE

Hydraulic oil
 Connectable under pressure
 Medium pressure

FAP-ZN*



Hydraulic oil
 Connectable under pressure
 High pressure

FAP-HP



Water-Glycol
 Not connectable under pressure
 Low pressure

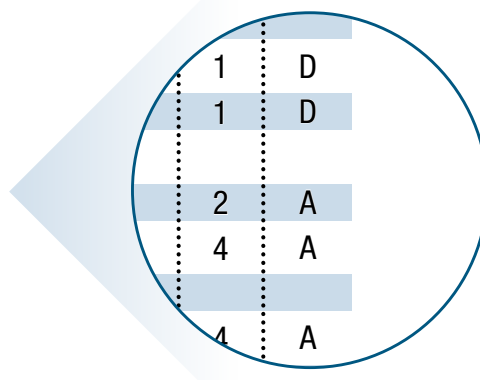
FAQ



Choose your port type (BSP/SAE-ORB/NPT...) and port size

* if size 3/8" check the multicoupling to know if you need a type A or D (See Multi Map pag. 16)

New name	Family	Total Lines	FAP9 (A)	
Body size			3/8"	
Max flow suggested (l/min)			46	
Mostly used adaptor (main alternative thread)			3/8" (1/2")	
DP2 2A-1EC	DP	2	2	A
DP2 2B-1EC	DP	2		
DP2 2B-2EC V04	DP	2		
DP2 2C	DP	2		
DP2 2D	DP	2		
DP2 1A-1B	DP	2	1	D
DP3 1A-1B-1EC	DP	3	1	D
DP3 1C-2E	DP	3		
DP3 2A-1EC	DP	3	2	A
DP4 4A-2EC	DP	4	4	A
DP4 4B-2EC	DP	4		
DP4 4A V02	DP	4	4	A
DP6 4A-2EC	DP	6	4	A
DP6 2A-4D-2EC	DP	6	2	D



DP - GR: features



Technical features and options



Interchange

Stucchi internal specification



Available threads

BSP NPT SAE



Mechanical connection

Internal cams and locking pins



Valving style

Flat Face



Connection/disconnection system

Rotating the lever after disengage the locking system



Operating pressure

Up to 350 bar/5000 psi



Construction material and surface treatment

Body plates in aluminum alloy with hard oxidation surface treatment for DP; Body plates in brass with nichel plating for GR; lever in carbon steel with zinc nickel plating.



Flow rate

Up to 378 l/min - 100 gpm



Nominal diameter available

FAP9=3/8", FAP13=1/2", FAP15=5/8", FAP17=3/4", FAP21=1"



Temperature

from -20 °C to +100 °C
(from -4 °F to +212 °F).



Connection under pressure

Connectable with residual pressure in both sides with FAP-ZN couplings

Application



Agriculture



Oil&Gas



Industry



High Pressure



Cooling



Refrigeration



Earth Moving



Vehicles



Hydraulic Equipment



Chemical & Food Industry

Benefits

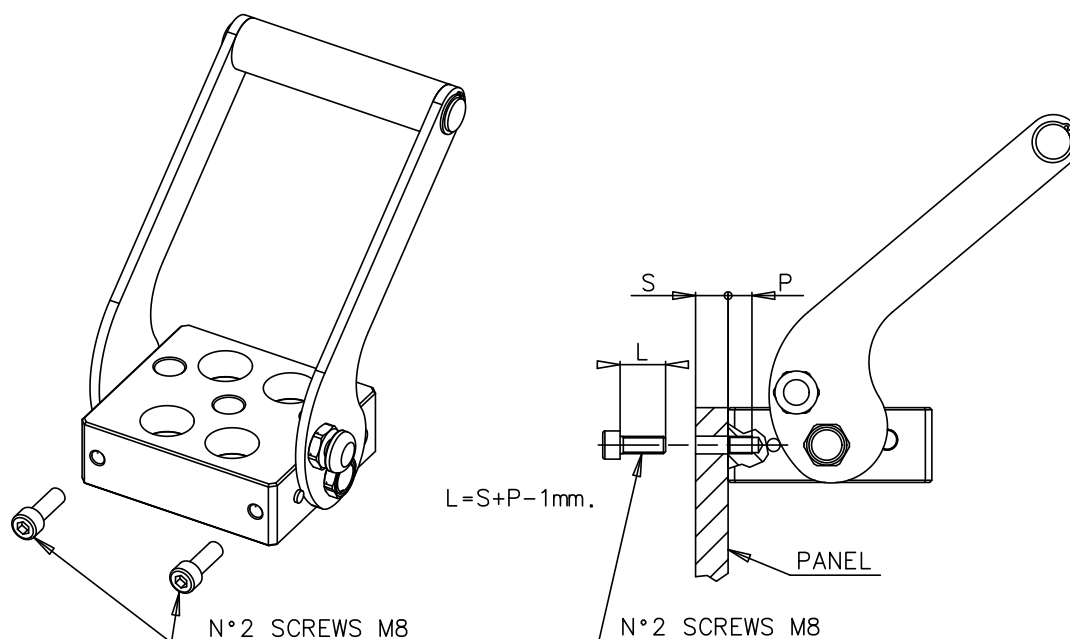
- Optimal solution for hydraulic fluid power applications with a operating pressure up to 350 bar.
- Quick connection and disconnection of up to ten hydraulic, electrical and pneumatic lines without any risk to incorrect connection of the lines.
- Ergonomic lever for easy connect/disconnect with residual pressure.
- Coupling design to connect/disconnect multiple couplings with high residual pressure.
- Flat face couplers eliminate environmental issue of leakage.
- No risk of misalignment or misconnection with guide pin design.
- Couplers mounted with snap rings for ease of installation or replacement.
- Fixed half male couplers interchangeable with FIRG or A series flat face coupling for temporary diagnostic purpose.
- Electrical connector option for electronic control systems.
- Easily mounted on new equipment or retrofit on pre-existing system.

DP - GR: installation

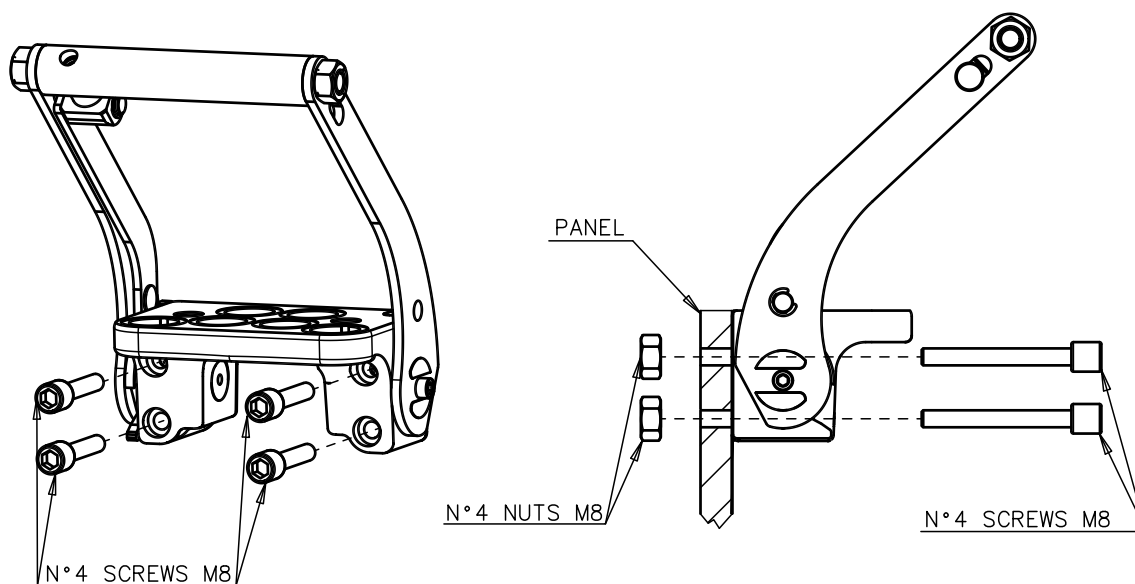
Installation

- Ensure the space to assemble the multiconnection is enough to allow the correct connection & disconnection in an ergonomic way. Check the drawing of the multiconnection referring to the corresponding datasheet.
- For GR version: If the fixed multiconnection has the couplings assembled in the holes: disassemble the couplings close to the fixing holes prior to proceed with the installation.
- Attach the fixed multicoupling on the machine using fixing screws as indicated in the drawing below.
- After having assembled the couplings on the hoses, place the couplings in the holes of the multicoupling and lock them using proper threaded sleeve and/or seeger/snap rings.
- Please refer to corresponding FAP-ZN or FAQ coupling series datasheet for further information.
- Use flexible hoses to connect the couplings; avoid to using rigid pipes as they could transmit excessive side load & vibration to the multiconnection.

DP



GR



DP - GR: installation

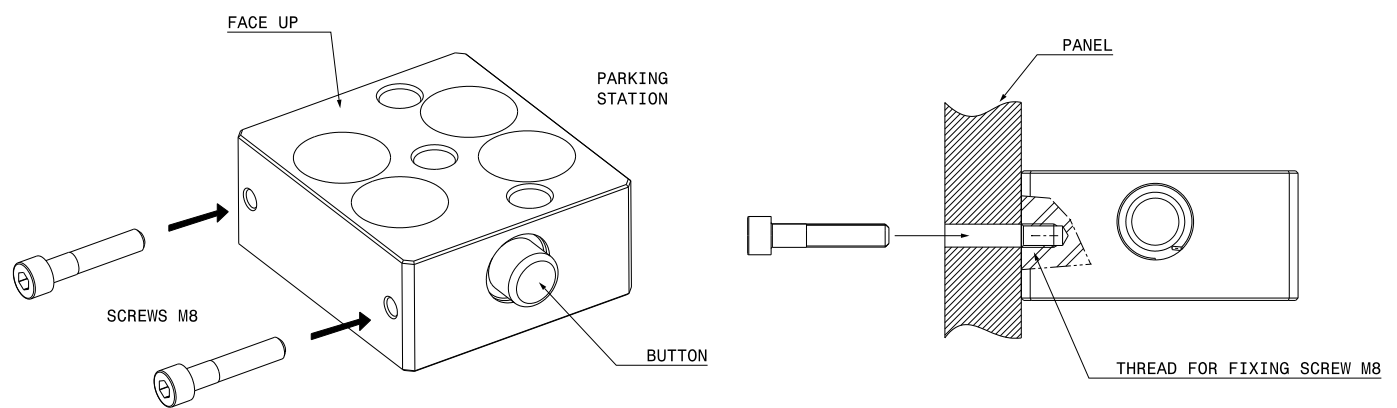
To install the parking station

Ensure the space to assemble the parking station is enough to allow the correct connection & disconnection in an ergonomic way. Check the drawing of the parking station.

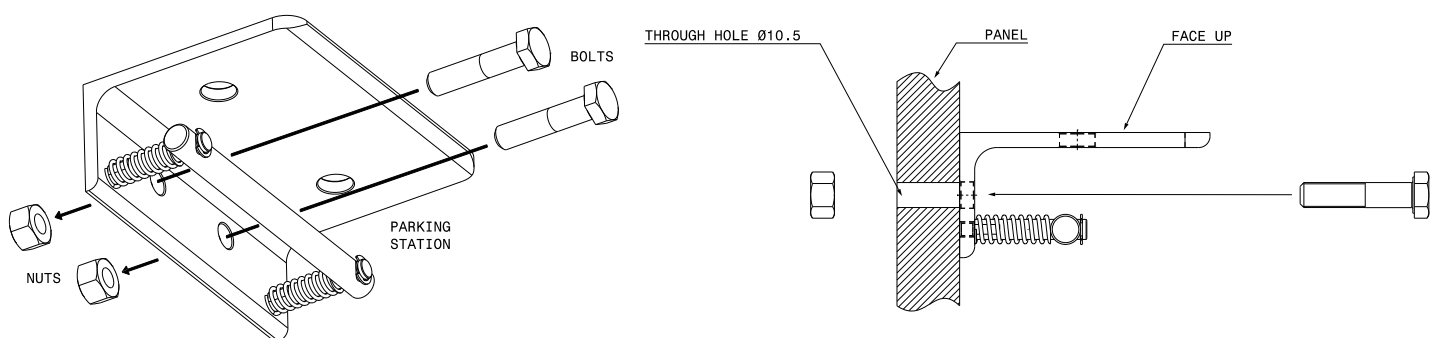
Fix the parking station body on the machine or the frame of the attachment using fixing screws as indicated in the drawing of the corresponding parking station.

Please verify the parking station is placed "face up".

DP

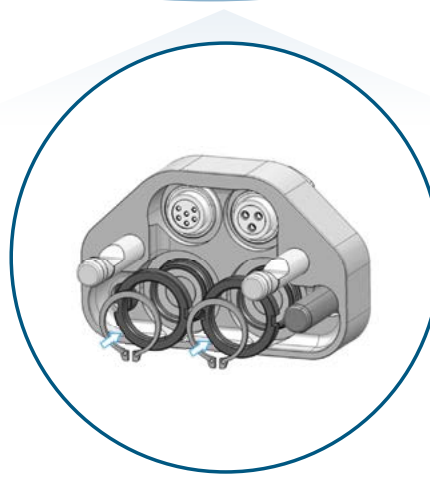
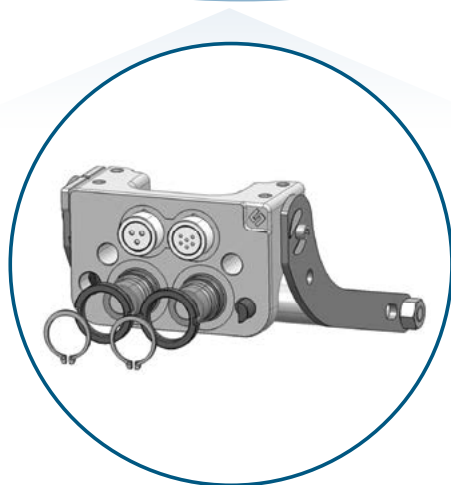
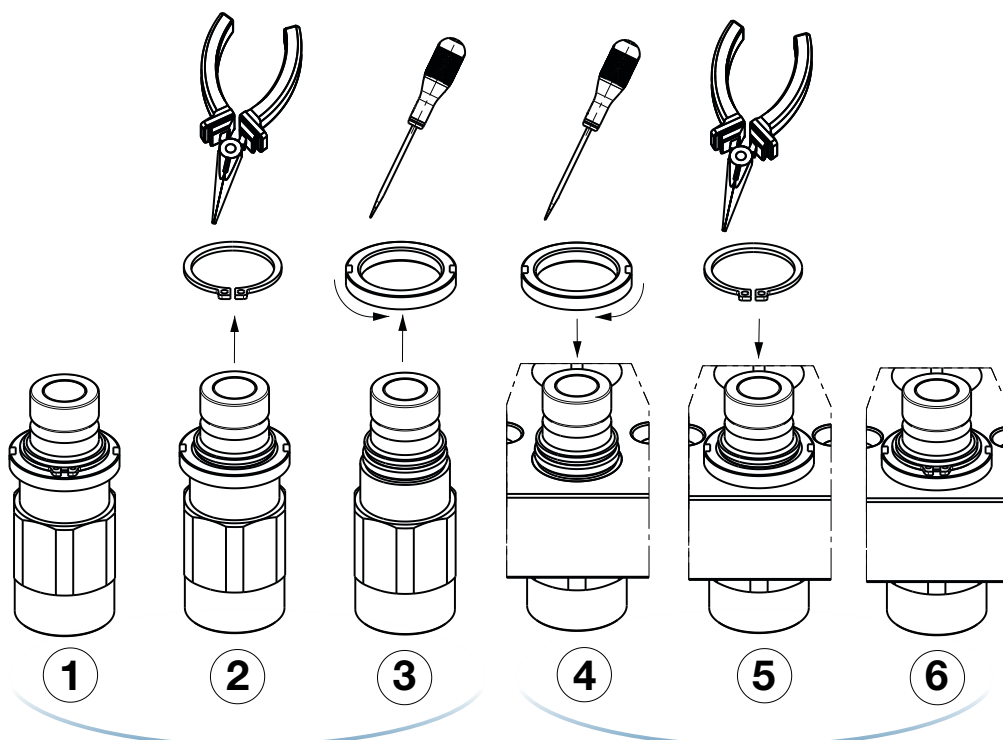


GR



FAP-ZN: How to install

- FAP-ZN couplings are normally supplied already assembled on the Stucchi multiconnection or may be supplied as a spare part to be replaced on a Stucchi multiconnection.
- To assemble the FAP-ZN couplings on the multiconnection: take away the seeger ring, unscrew the threaded nut, mount the flexible hose on the threaded port (screwing with the proper torque), insert the coupling in the hole of the multiconnection; screw the threaded nut with a manual torque (an overtorque is not necessary!) then assemble the seeger ring to lock the threaded nut (fig. below 1...6) .
- To disassemble the FAP-ZN couplings from the multiconnection: take away the seeger ring, unscrew the threaded nut, extract the coupling from the hole of the multiconnection (fig. below viceversa 6 to 4) then proceed to disassemble the flexible hose from the threaded port.
- Before connecting clean the flat mating surface of coupling to avoid inclusion of contamination in the circuit.
- Connect and disconnect in according to the instruction of use for multicoupling.
- Test the correct functioning of the couplings
- Replace the seeger ring every 50.000 impulses.



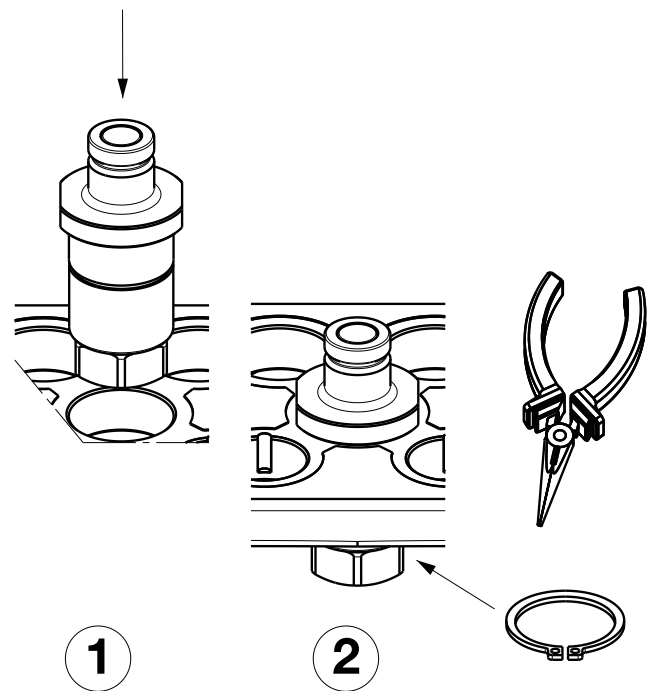
WARNING

During the assembly/dismantling of the quick couplings, be careful to not deform the seeger rings. If deformed, replace them. Replace the seeger ring every 50.000 impulses.



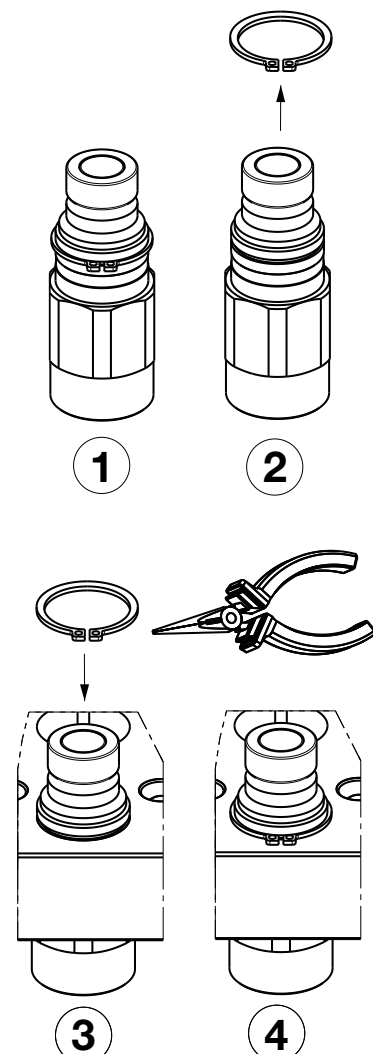
FAP-HP: How to install

- FAP-HP couplings are normally supplied already assembled in the Stucchi multiconnection or may be supplied as a spare part to be replaced on a Stucchi multiconnection.
- To assemble the FAP-HP couplings in the multiconnection: take away the seeger ring on the back side of the male & female, insert the coupling in the hole of the multiconnection then assemble the seeger ring on the back of side to lock the couplings in the plates, mount the flexible hose on the threaded port (screwing with the proper torque), (fig. below 1...2) .
- To disassemble the FAP-HP couplings from the multiconnection: take away the seeger ring from the back side of male & female then proceed to disassemble the flexible hose from the threaded port. , extract the coupling from the hole of the multiconnection (fig. below reverse process)
- Before connecting clean the flat mating surface of coupling to avoid inclusion of contamination in the circuit.
- Connect and disconnect in according to the instruction of use for multicoupling.
- Test the correct functioning of the couplings



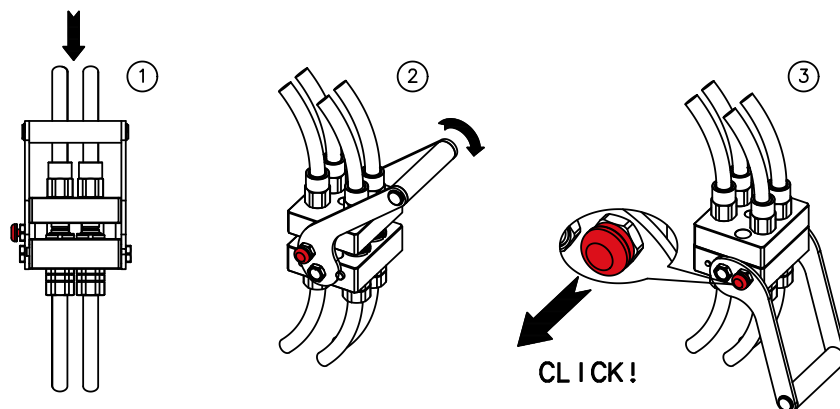
FAQ: How to install

- FAQ couplings may be fitted in the same holes of FAP-ZN couplings; read the table on the specific multiconnection as described below:
- FAP9A: in the hole may be assembled the FAQ9A coupling
- FAP9D: in the hole may be assembled the FAQ9D coupling
- FAP13 or FAP15 or FAP17 or FAP21 : in the hole may be assembled respectively FAQ13,15,17,21 coupling.
- FAQ couplings are normally supplied already assembled on the Stucchi multiconnection or may be supplied as a spare part to be replaced on a Stucchi multiconnection.
- To assemble/disassemble the FAQ couplings on the multiconnection: take away the seeger ring from the groove, assemble the flexible hose on the threaded port, insert the coupling in the proper hole of the multiconnection; then assemble the seeger ring to lock the FAQ in the multiconnection. Follow the sequence shown in the drawing below from 1 to 4 for assembly operation; to disassemble follow the same sequence but viceversa from 4 to 1.
- Be careful during the assembly of the seeger ring: if damaged replace it with a new one.
- Before to couple clean the flat mating surface of quick coupling to avoid the inclusion of dirty in the circuit.
- Connect and disconnect in according to the instruction of use for multicoupling.



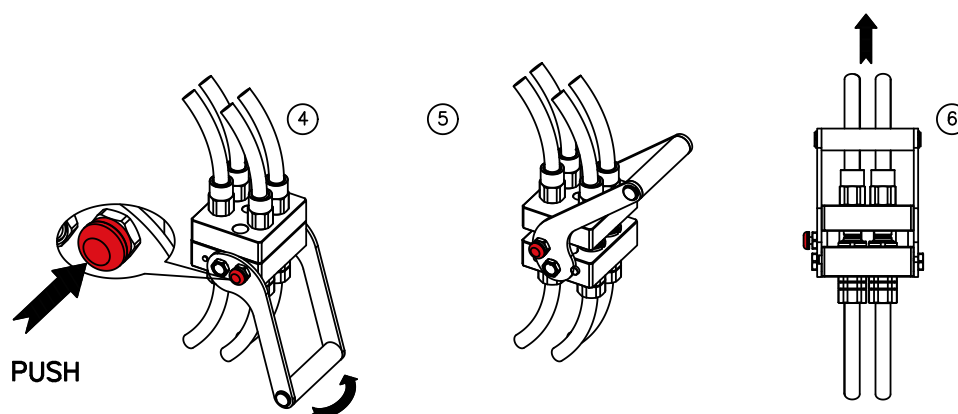
To connect

- Before coupling, clean the flat mating surface of the couplings to avoid inclusion of dirt in the circuit.
- Insert the guidance pins of the mobile multicoupling into the holes of the fixed multicoupling and move the mobile half till the contact of the couplings faces (fig. 1).
- Acting on the handle turn the lever in the direction of the fixed multicoupling (fig. 2).
- Continue to rotate till the safety lock automatically engage itself (fig. 3).
- Now the multicoupling is coupled and ready to work.
- In case of connection with residual pressure in the circuit, the maximum force is required only for the last third of the connection.



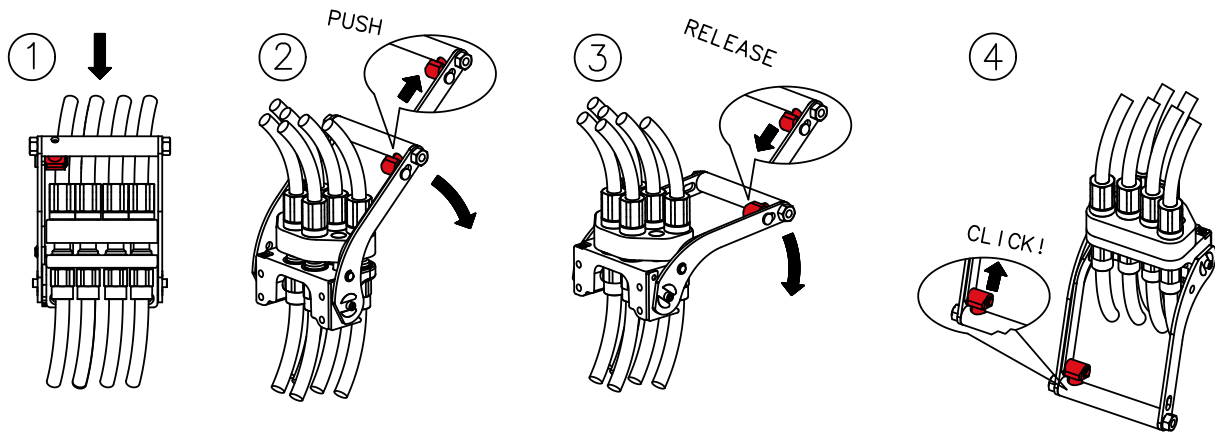
To disconnect

- Push the red safety button, at the same time acting on the handle turn the lever in the direction of the mobile multicoupling (fig. 4).
- Continue to rotate till the mechanical stop of the levers (fig. 5).
- Now the multicoupling is uncoupled and it is possible to pull out the mobile half (fig. 6).
- In case of disconnection with residual pressure in the circuit, the maximum force is required only for the first third of the disconnection.



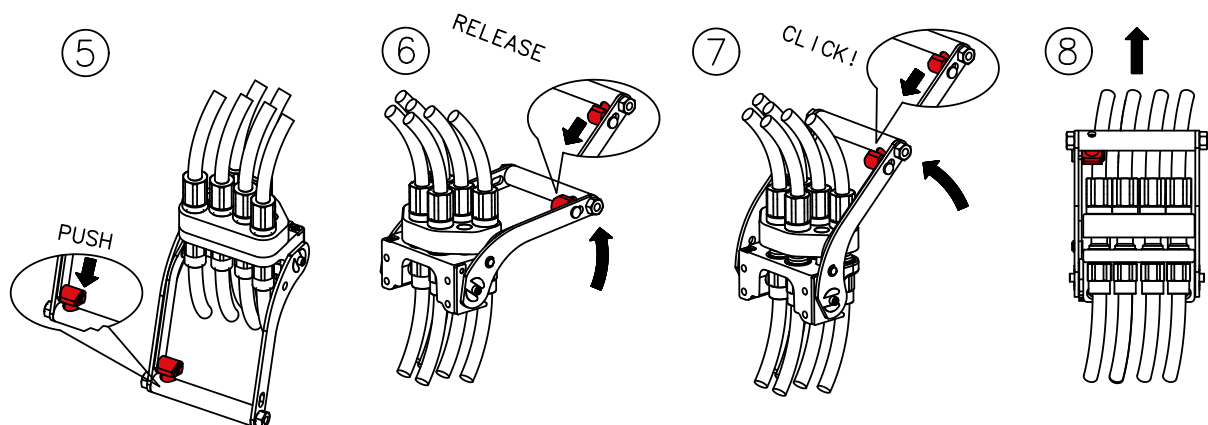
To connect

- Before coupling, clean the flat mating surface of the couplings to avoid the inclusion of dirt in the circuit.
- Insert the guidance pins of the mobile multicoupling into the holes of the fixed multicoupling and move the mobile half till the contact of the couplings faces (fig. 1).
- Push the red safety button to unlock the rotation of the lever, and in the same time acting on the handle turn the lever in the direction of the fixed multicoupling (fig. 2).
- After a short rotation release the red button (fig. 3).
- Continue to rotate till the safety lock automatically engage itself (fig. 4).
- Now the multicoupling is coupled and ready to work.
- In case of connection with residual pressure in the circuit, the maximum force is required only for the last third of the connection.



To disconnect

- Push the red safety button, at the same time acting on the handle turn the lever in the direction of the mobile multicoupling (fig. 5).
- After a short rotation release the red button (fig. 6).
- Continue to rotate till the mechanical stop of the levers (fig. 7).
- Now the multicoupling is uncoupled and it is possible to pull out the mobile half (fig. 8).
- In case of disconnection with residual pressure in the circuit, the maximum force is required only for the first third of the disconnection.



Resistance

All Stucchi multicouplings have been tested at their maximum resistance by impulse pressure test (for 200.000 cycles in according with ISO norm; 100.000 cycles for model GRHP7 7A-4EC).

The maximum resistance (N) for each multicoupling model is indicated in the data sheets.

The force applied to multicoupling coupled depends on the number of couplings under pressure at the same time, on their operating pressure and on their size. For a correct use of the multicoupling it is necessary to verify that the force is not higher than the maximum resistance of the multicoupling.

$$F = [(P3/8 \times S3/8) + (P1/2 \times S1/2) + (P5/8 \times S5/8) + (P3/4 \times S3/4) + (P1 \times S1)] \times 10$$

F = Force applied to multicoupling (N)

P = Total amount of operating pressure coupled in the couplings with same size (bar)

S = Hydrostatic pushing area coupled cm²

The operating pressure for a single coupling must not be higher than the maximum operating pressure coupled indicated in table.

Coupling size	Hydrostatic pushing area coupled	Maximum operating pressure coupled for FAP-ZN couplings
FAP-ZN9 - 3/8	S3/8= 1,226 cm ²	35 Mpa (350 bar)
FAP-ZN13 - 1/2	S1/2= 1,893 cm ²	33 Mpa (330 bar)
FAP-ZN15 - 5/8	S5/8= 2,404 cm ²	33 Mpa (330 bar)
FAP-ZN17 - 3/4	S3/4= 3,298 cm ²	33 Mpa (330 bar)
FAP-ZN21 - 1	S1 = 4,335 cm ²	30 Mpa (300 bar)

Example

Max. resistance of 870015092 MULTI COMPLETE GR6 2A-2C-2D is 23000 N.

To verify if 870015092 MULTI COMPLETE GR6 2A-2C-2D multicoupling resists to operating condition of following application:

One line size 3/8 with max. operating pressure coupled of 30 Mpa (300 bar)

One line size 3/8 with max. operating pressure coupled of 15 Mpa (150 bar)

One line size 5/8 with max. operating pressure coupled of 25 Mpa (250 bar)

One line size 5/8 with max. operating pressure coupled of 10 Mpa (100 bar)

One line size 3/4 with max. operating pressure coupled of 20 Mpa (200 bar)

One line size 3/4 with max. operating pressure coupled of 5 Mpa (50 bar)

It is necessary to verify that F (force applied to multicoupling) is not greater than max. multicoupling resistance:

$$P3/8 = 300 \text{ bar} + 150 \text{ bar} = 450 \text{ bar}$$

$$P5/8 = 250 \text{ bar} + 100 \text{ bar} = 350 \text{ bar}$$

$$P3/4 = 200 \text{ bar} + 50 \text{ bar} = 250 \text{ bar}$$

$$F = [(P3/8 \times S3/8) + (P5/8 \times S5/8) + (P3/4 \times S3/4)] \times 10 =$$

$$F = [(450 \times 1,226) + (350 \times 2,404) + (250 \times 3,298)] \times 10 =$$

$$F = [551.7 + 841.4 + 824.5] \times 10 = 22.176 \text{ N}$$

Being F (21732 N) lower than max. multicoupling resistance (23000 N), the 870015092 MULTI COMPLETE GR6 2A-2C-2D multicoupling is suitable for this application.

WARNING

A defect, a wrong choice or an improper use of products, can cause injury to persons, animals and objects.

Never connect or disconnect with dynamic pressure (e.g. pump on).

Do not use the female coupling disconnected with high impulse pressure.

Do not couple-uncouple with flow and/or pressure in the circuit.

Do not couple-uncouple when the temperature inside of the circuit is higher than 80 °C (176 °F).

Check the maximum allowable operating pressure of the port in use.

Make sure that the medium used is compatible with seal and material as indicated for each series.

In case of doubt please contact Stucchi Technical Support.

It is MANDATORY to read and closely follow the instructions. Last updated version always apply at time of installation, see latest written Instructions on Stucchi website (stucchigroup.com) before selecting or using Stucchi products.

Do not force the lever without pushing the red safety button.

Do not use extensions or other tools to ease the rotating of the lever.

Do not connect the fixed half with the mobile half if dirt or other material (tool, finger) is between them

Pay attention during the connection not to put finger or other body parts between the plates

We advise to assemble the multicoupling with the female face down in order to allow water or moisture to be drained easily.

Do not exceed single coupling performance and total multicoupling resistance of the multicoupling (please refer to dedicated datasheet)

Read&follow also the corresponding catalogue of the coupling and/or electrical connector in use in the multicoupling.

When the multicoupling is disconnected, it is suggested to use the protection cover for the fixed half and the parking station for the mobile half.

Do not modify, disassemble or damage the multicoupling, part of it or coupling/electrical connector, the lever or safety lock system.

Stucchi Multicoupling GR&DP are intended to be used for hydraulic oil applications: do not use the products for dangerous, inflammable or explosive fluids (Example: heat transfer oil at very high temperature, steam ...).

Stucchi Multicoupling GR&DP are intended to be used for hydraulic oil applications with limitations given by NBR seal compatibility&temperature range.

Do not use GR&DP series multicoupling for very high temperature applications.



Medium/High pressure



DP p. 30

Valving style: Flat face
Interchange: Stucchi profile
Sealing description: Nitrile NBR
Available sizes: From 3/8" to 1"
Flow rate: Up to 378 l/min
Material: Carbon steel, Aluminium / Cr3
Connection under pressure: Allowed



GR p. 60

Valving style: Flat face
Interchange: Stucchi profile
Sealing description: Nitrile NBR
Available sizes: From 3/8" to 1"
Flow rate: Up to 378 l/min
Material: Carbon steel, Brass / Cr3
Connection under pressure: Allowed

COUPLINGS



FAP-ZN p. 125

Valving style: Flat face
Interchange: Stucchi interface
Available sizes: From 3/8" to 1"
Operating pressure: Up to 350 bar
Flow rate: Up to 378 l/min
Material: High strength carbon steel
Connection system: By multicoupling
Connection under pressure: Both sides, easy connection



FAP-HP p. 133

Valving style: Flat face
Interchange: Stucchi interface
Available sizes: 3/8"
Operating pressure: Up to 720 bar
Flow rate: Up to 46 l/min
Material: High strength carbon steel
Connection system: By multicoupling
Connection under pressure: Both sides, easy connection



FAQ p. 139

Valving style: Flat face
Interchange: Stucchi interface
Available sizes: From 3/8" to 3/4"
Operating pressure: Up to 20 bar
Flow rate: Up to 200 l/min
Material: High strength carbon steel
Connection system: By multicoupling
Connection under pressure: Not allowed

ELECTRICAL CONNECTOR



EC p. 152

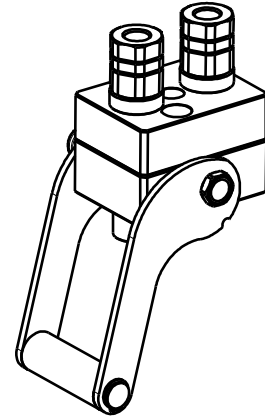
Interchange: Stucchi interface
Max number of contacts: 7
Seals: NBR (Nitrile)
Material: Body brass nickel plated;
cable retainer in plastic
Contact diameter: 2 mm
Ampere: 12 service to 15 max (each contact)
Voltage: 24V max
Connection contact and electrical wire: To crimp
IP protection: Not listed

DP2 2A-1EC

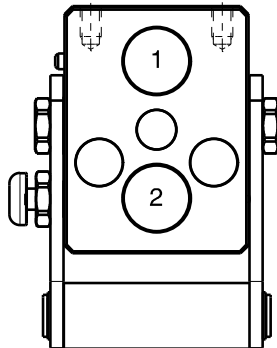


Previous description	Max. Resistance	FAP9 (A)	FAP13 (B)	FAP15 (C)	FAP17 (D)	FAP21 (E)
Body size		3/8"	1/2"	5/8"	3/4"	1"
DP2-9ZN	8000 N	2 A				

DRAWING



CONFIGURATIONS



Possible configurations		
Pos	Coupling size	Predisposition for electrical connector
1	FAP9AZN	YES
2	FAP9AZN	-

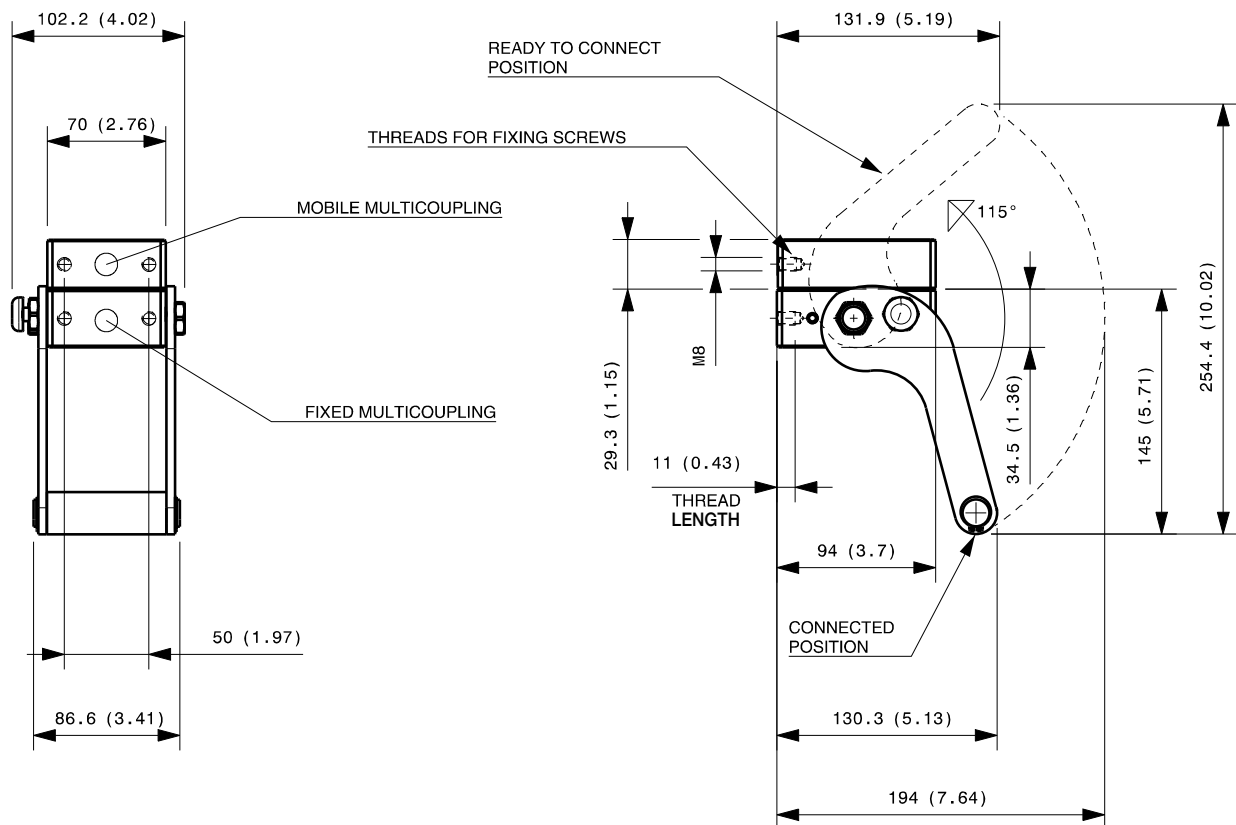
MultiCoupling (couplings included)		
Code	Name	Description
870007015	MULTI COMPLETE DP2 2A	2 FAP9A 1/2 BSP - CAP
870007016	MULTI COMPLETE DP2 2A	2 FAP9A 3/8 BSP - CAP
870007115	MULTI FIX DP2 2A	2 FAP9A 1/2 BSP
870007116	MULTI FIX DP2 2A	2 FAP9A 3/8 BSP
870007215	MULTI MOBILE DP2 2A	2 FAP9A 1/2 BSP
870007216	MULTI MOBILE DP2 2A	2 FAP9A 3/8 BSP

MultiCoupling spare parts (couplings not included)	
Code	Name
806000344	MULTI FIX EMPTY DP2 2A-1EC
806000345	MULTI MOBILE EMPTY DP2 2A-1EC
815606266	CAP FIX MULTICOUPLING DP 94x70
815606267	PARKING STATION MOBILE MULTICOUPLING DP 94x70
815701083	SPARE KIT LEVER GROUP DP 130x87

Custom configurations available upon request

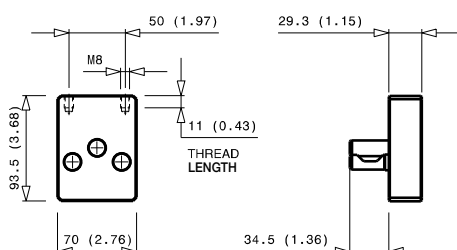
Fixed and mobile multicoupling

1,3 Kg and 0,6 Kg

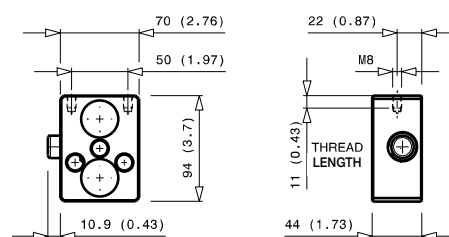


Dimensions in millimeters (inch)

Cap for fixed multicoupling 0,5 Kg



Parking station for mobile multicoupling 0,6 Kg

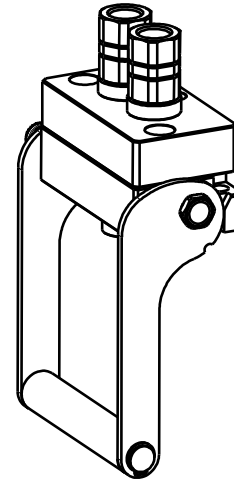


DP2 2A-2EC V04

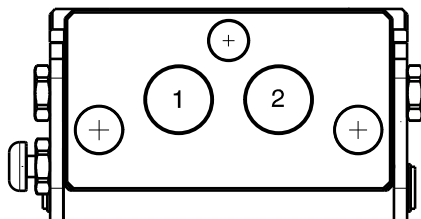


Previous description	Max. Resistance	FAP9 (A)	FAP13 (B)	FAP15 (C)	FAP17 (D)	FAP21 (E)
Body size		3/8"	1/2"	5/8"	3/4"	1"
DP2-9L	8000 N	2	A			

DRAWING



CONFIGURATIONS



Possible configurations		
Pos	Coupling size	Predisposition for electrical connector
1	FAP9AZN	YES
2	FAP9AZN	YES

MultiCoupling (couplings included)		
Code	Name	Description
870008022	MULTI COMPLETE DP2 2A V04*	2 FAP9A 1/2 BSP - CAP
870008122	MULTI FIX DP2 2A V04*	2 FAP9A 1/2 BSP
870008222	MULTI MOBILE DP2 2A V04*	2 FAP9A 1/2 BSP

* V04 = it differs from DP2 2A standard because it is longitudinal and has a different angle lever

MultiCoupling spare parts (couplings not included)	
Code	Name
806000410	MULTI FIX EMPTY DP2 2A-2EC V04*
806000411	MULTI MOBILE EMPTY DP2 2A-2EC V04*
815606310	CAP FIX MULTICOUPLING DP 125x69
815606311	PARKING STATION MOBILE MULTICOUPLING DP 125X69
815701215	SPARE KIT LEVER GROUP DP 150x142

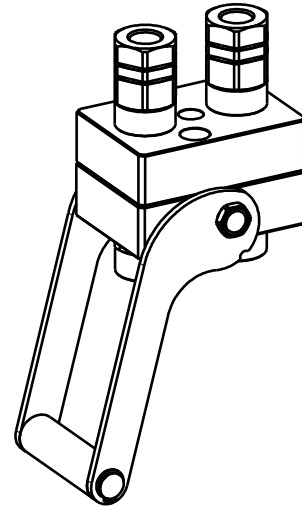
* V04 = it differs from DP2 2A standard because it is longitudinal and has a different angle lever

DP2 2B-1EC

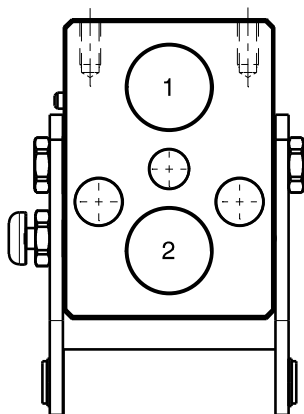


Previous description	Max. Resistance	FAP9 (A)	FAP13 (B)	FAP15 (C)	FAP17 (D)	FAP21 (E)
Body size		3/8"	1/2"	5/8"	3/4"	1"
DP2-13ZN	12000 N		2			

DRAWING



CONFIGURATIONS



Possible configurations		
Pos	Coupling size	Predisposition for electrical connector
1	FAP13ZN	YES
2	FAP13ZN	-

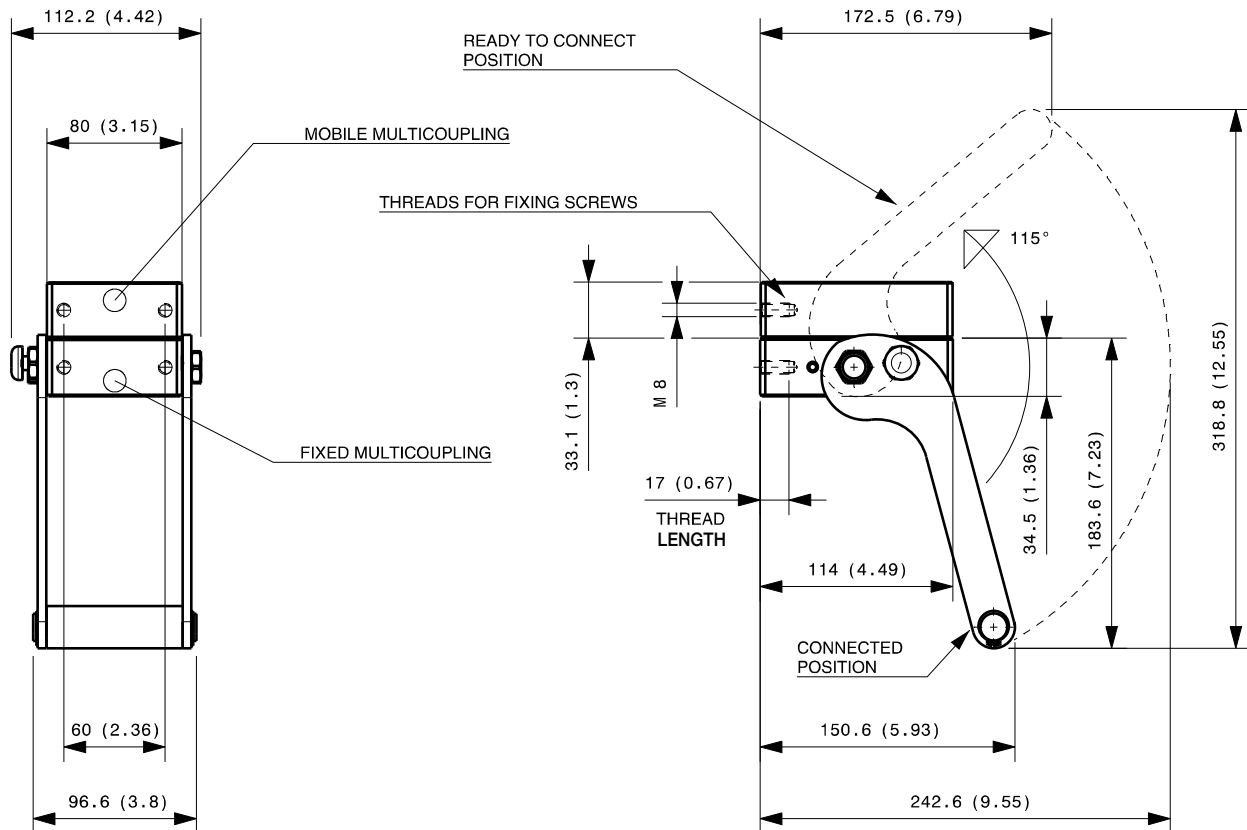
MultiCoupling (couplings included)		
Code	Name	Description
870008016	MULTI COMPLETE DP2 2B	2 FAP13 3/4 BSP - CAP
870008019	MULTI COMPLETE DP2 2B	2 FAP13 1/2 BSP - CAP
870008032	MULTI COMPLETE DP2 2B	2 FAP13 1/2 NPT - CAP
870008119	MULTI FIX DP2 2B	2 FAP13 1/2 BSP
870008219	MULTI MOBILE DP2 2B	2 FAP13 1/2 BSP
870008216	MULTI MOBILE DP2 2B	2 FAP13 3/4 BSP

MultiCoupling spare parts (couplings not included)	
Code	Name
806000346	MULTI FIX EMPTY DP2 2B-1EC
806000347	MULTI MOBILE EMPTY DP2 2B-1EC
815606270	CAP FIX MULTICOUPLING DP 114x80
815606271	PARKING STATION MOBILE MULTICOUPLING DP 114x80
815701082	SPARE KIT LEVER GROUP DP 170x97

Custom configurations available upon request

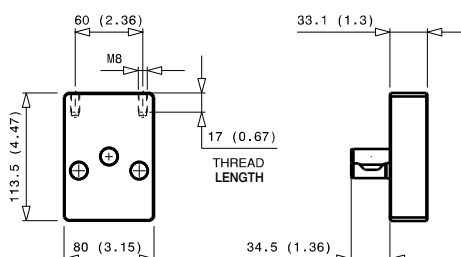
Fixed and mobile multicoupling

1,6 Kg and 0,8 Kg

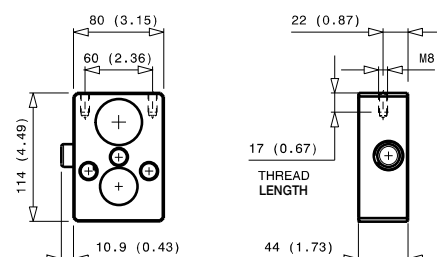


Dimensions in millimeters (inch)

Cap for fixed multicoupling 0,8 Kg



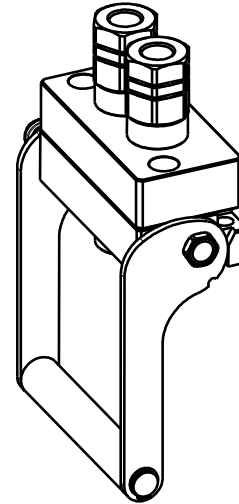
Parking station for mobile multicoupling 0,8 Kg



DP2 2B-2EC V04

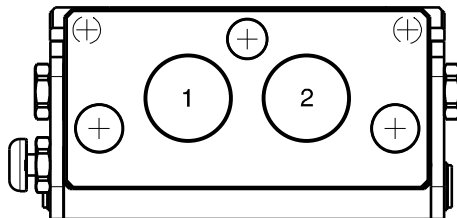
Previous description	Max. Resistance	FAP9 (A)	FAP13 (B)	FAP15 (C)	FAP17 (D)	FAP21 (E)
Body size		3/8"	1/2"	5/8"	3/4"	1"
DP2-13L	12000 N		2			

DRAWING



CONFIGURATIONS

Possible configurations		
Pos	Coupling size	Predisposition for electrical connector
1	FAP13ZN	YES
2	FAP13ZN	YES



MultiCoupling (couplings included)		
Code	Name	Description
870008012	MULTI COMPLETE DP2 2B V04*	2 FAP13 1/2 BSP - CAP
870008112	MULTI FIX DP2 2B V04*	2 FAP13 1/2 BSP
870008121	MULTI FIX DP2 2B V05**	2 FAP13 3/4 BSP
870008212	MULTI MOBILE DP2 2B V04*	2 FAP13 1/2 BSP
870008221	MULTI MOBILE DP2 2B V04*	2 FAP13 3/4 BSP

* V04 = it differs from DP2 2B standard because is longitudinal and has a different angle lever (compact version)

** V05 = it differs from DP2 2B standard because is longitudinal

MultiCoupling spare parts (couplings not included)	
Code	Name
806000368	MULTI FIX EMPTY DP2 2B-2EC V04*
806000402	MULTI FIX EMPTY DP2 2B-2EC V05**
806000369	MULTI MOBILE EMPTY DP2 2B-2EC V04*
815606240	CAP FIX MULTICOUPLING DP 139x69
815606309	PARKING STATION MOBILE MULTICOUPLING DP 139x69
815701088	SPARE KIT LEVER GROUP DP 150x156

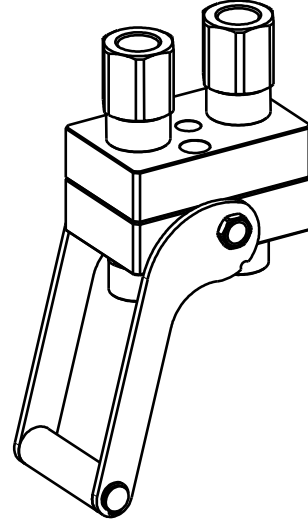
* V04 = it differs from DP2 2B standard because is longitudinal and has a different angle lever (compact version)

** V05 = it differs from DP2 2B standard because is longitudinal

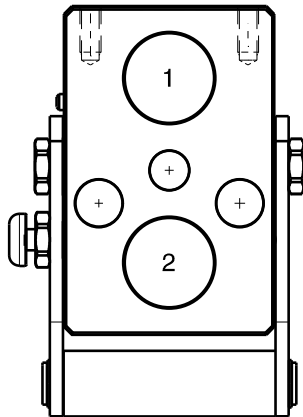
DP2 2C

Previous description	Max. Resistance	FAP9 (A)	FAP13 (B)	FAP15 (C)	FAP17 (D)	FAP21 (E)
Body size		3/8"	1/2"	5/8"	3/4"	1"
DP2-15	15500 N			2		

DRAWING



CONFIGURATIONS



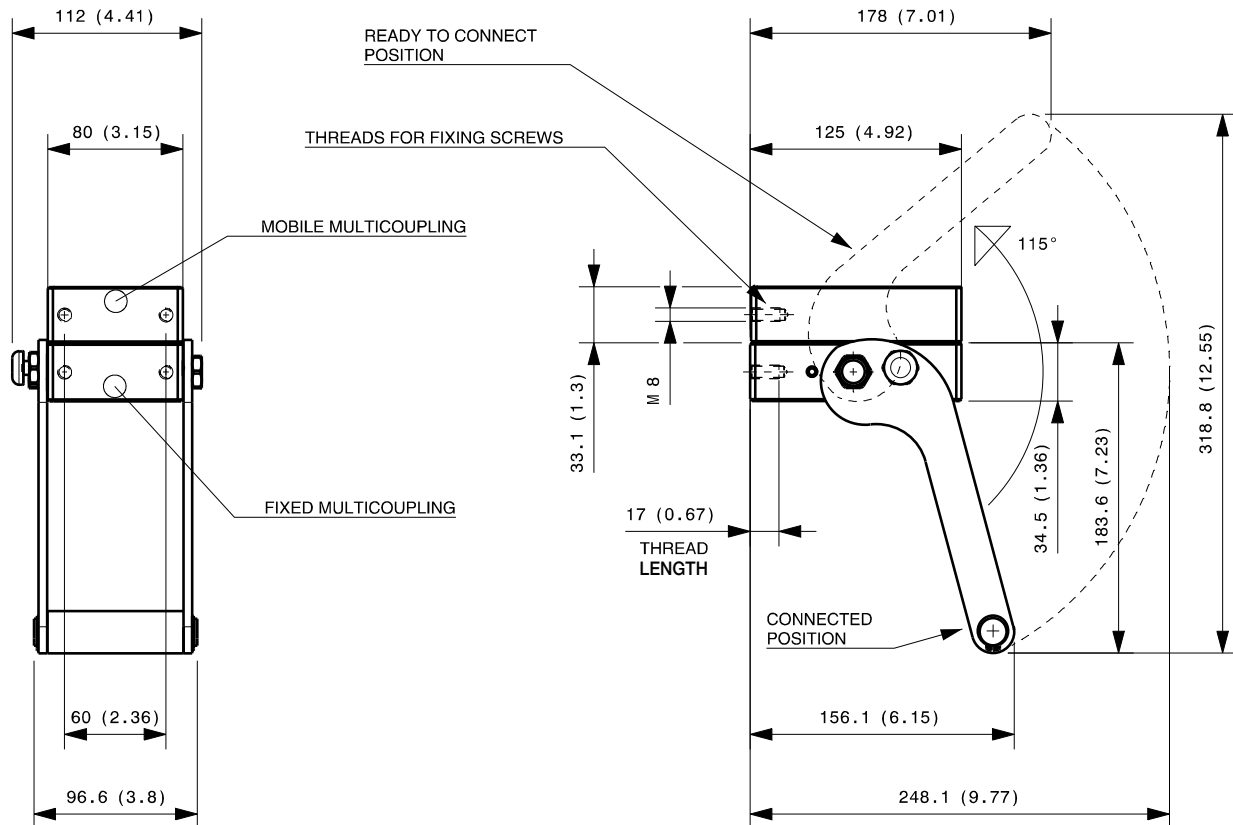
Possible configurations		
Pos	Coupling size	Predisposition for electrical connector
1	FAP15ZN	-
2	FAP15ZN	-

MultiCoupling (couplings included)		
Code	Name	Description
870008018	MULTI COMPLETE DP2 2C	2 FAP15 3/4 BSP - CAP
870008118	MULTI FIX DP2 2C	2 FAP15 3/4 BSP
870008218	MULTI MOBILE DP2 2C	2 FAP15 3/4 BSP

MultiCoupling spare parts (couplings not included)	
Code	Name
806000308	MULTI FIX EMPTY DP2 2C
806000309	MULTI MOBILE EMPTY DP2 2C
815606238	CAP FIX MULTICOUPLING DP 125x80
815606239	PARKING STATION MOBILE MULTICOUPLING DP 125x80
815701082	SPARE KIT LEVER GROUP DP 170x97

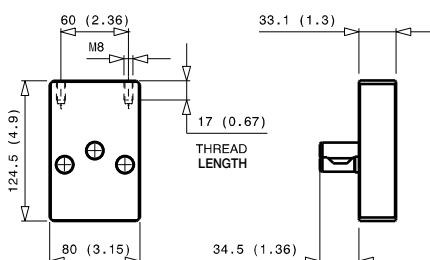
Fixed and mobile multicoupling

1,6 Kg and 0,8 Kg

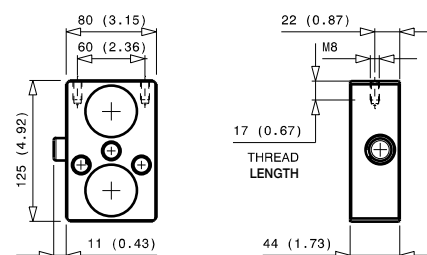


Dimensions in millimeters (inch)

Cap for fixed multicoupling 0,8 Kg



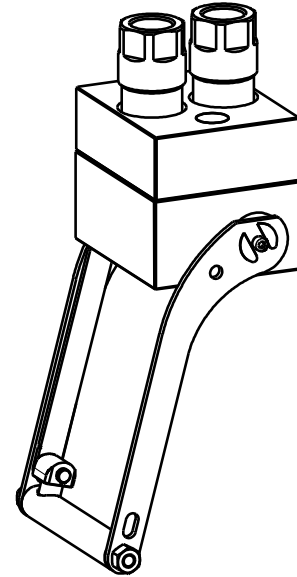
Parking station for mobile multicoupling 0,8 Kg



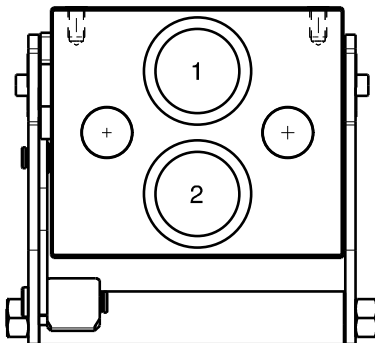
DP2 2D

Previous description	Max. Resistance	FAP9 (A)	FAP13 (B)	FAP15 (C)	FAP17 (D)	FAP21 (E)
Body size		3/8"	1/2"	5/8"	3/4"	1"
DP2-17ZN	18000 N				2	

DRAWING



CONFIGURATIONS



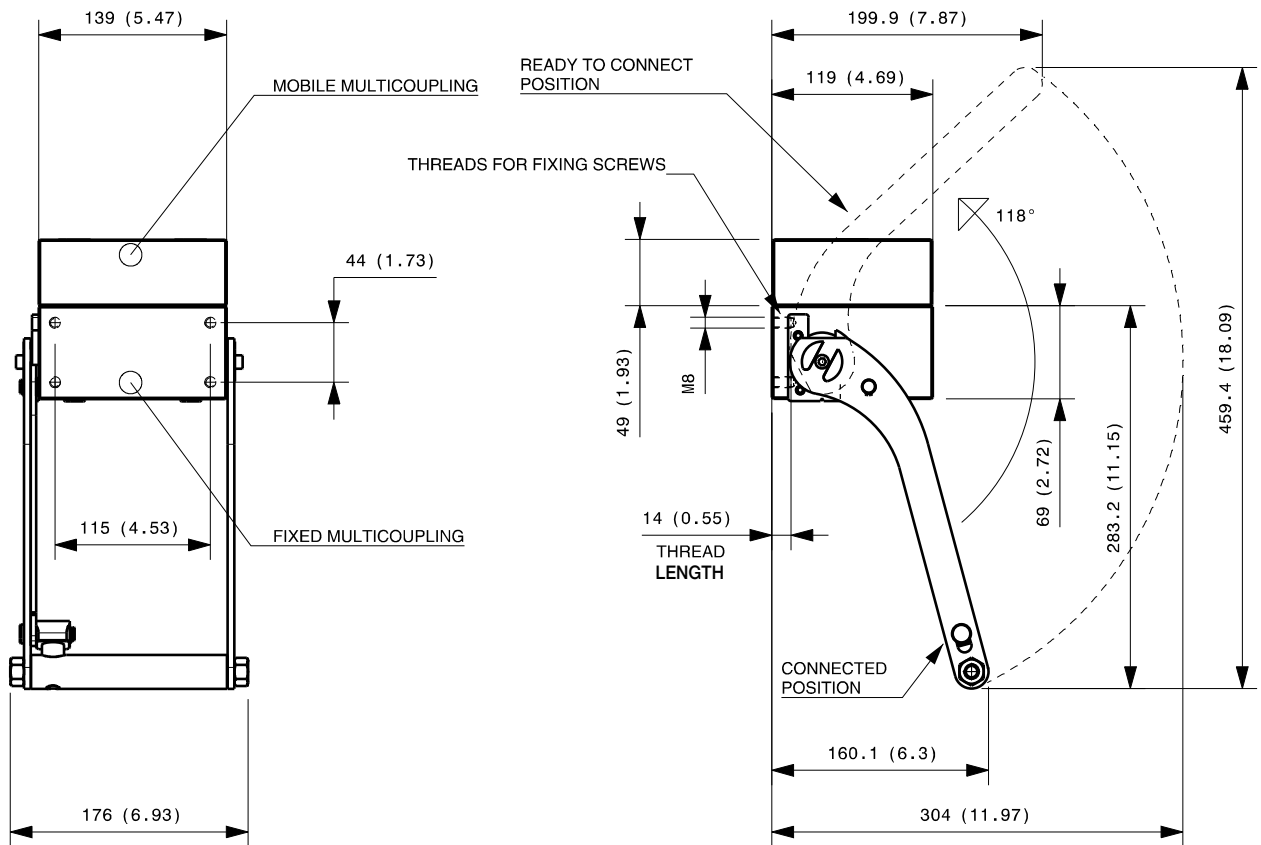
Possible configurations		
Pos	Coupling size	Predisposition for electrical connector
1	FAP17ZN	-
2	FAP17ZN	-

MultiCoupling (couplings included)		
Code	Name	Description
870008029	MULTI COMPLETE DP2 2D	2 FAP17 3/4 BSP - CAP
870008017	MULTI COMPLETE DP2 2D	2 FAP17 1 BSP - CAP
870008013	MULTI COMPLETE DP2 2D	1 FAP17 3/4 NPT - 1 FAP17 1 NPT - CAP
870008113	MULTI FIX DP2 2D	2 FAP17 1 NPT
870008117	MULTI FIX DP2 2D	2 FAP17 1 BSP
870008124	MULTI FIX DP2 2D	1 FAP17 3/4 SAE - 1 FAP17 1 SAE
870008126	MULTI FIX DP2 2D	2 FAP17 3/4 SAE
870008129	MULTI FIX DP2 2D	2 FAP17 3/4 BSP
870008213	MULTI MOBILE DP2 2D	2 FAP17 1 NPT
870008217	MULTI MOBILE DP2 2D	2 FAP17 1 BSP
870008224	MULTI MOBILE DP2 2D	1 FAP17 3/4 SAE - 1 FAP17 1 SAE
870008226	MULTI MOBILE DP2 2D	2 FAP17 3/4 SAE
870008229	MULTI MOBILE DP2 2D	2 FAP17 3/4 BSP

MultiCoupling spare parts (couplings not included)	
Code	Name
806000348	MULTI FIX EMPTY DP2 2D
806000349	MULTI MOBILE EMPTY DP2 2D
815606272	CAP FIX MULTICOUPLING DP 139x118
815606273	PARKING STATION MOBILE MULTICOUPLING DP 139x120
815701084	SPARE KIT LEVER GROUP DP 250x176

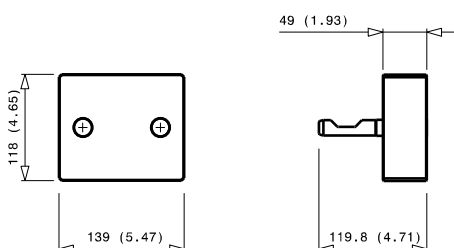
Fixed and mobile multicoupling

3,9 Kg and 2,1 Kg

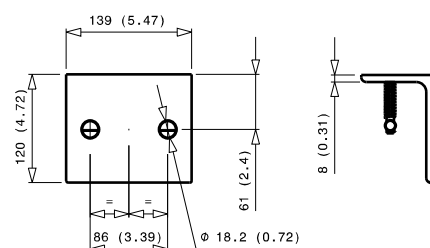


Dimensions in millimeters (inch)

Cap for fixed multicoupling 2,3 Kg



Parking station for mobile multicoupling 1,8 Kg

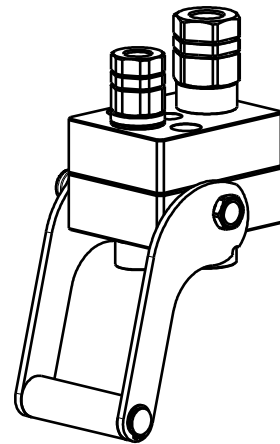


DP2 1A-1B

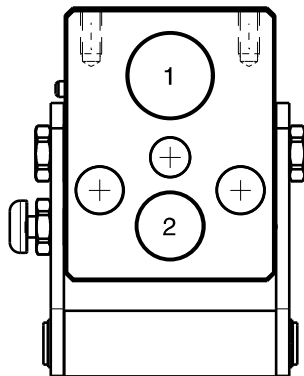


Previous description	Max. Resistance	FAP9 (A)	FAP13 (B)	FAP15 (C)	FAP17 (D)	FAP21 (E)
Body size		3/8"	1/2"	5/8"	3/4"	1"
DPT2ZN	10000 N	1 D	1			

DRAWING



CONFIGURATIONS



Possible configurations		
Pos	Coupling size	Predisposition for electrical connector
1	FAP13ZN	-
2	FAP9DZN	-

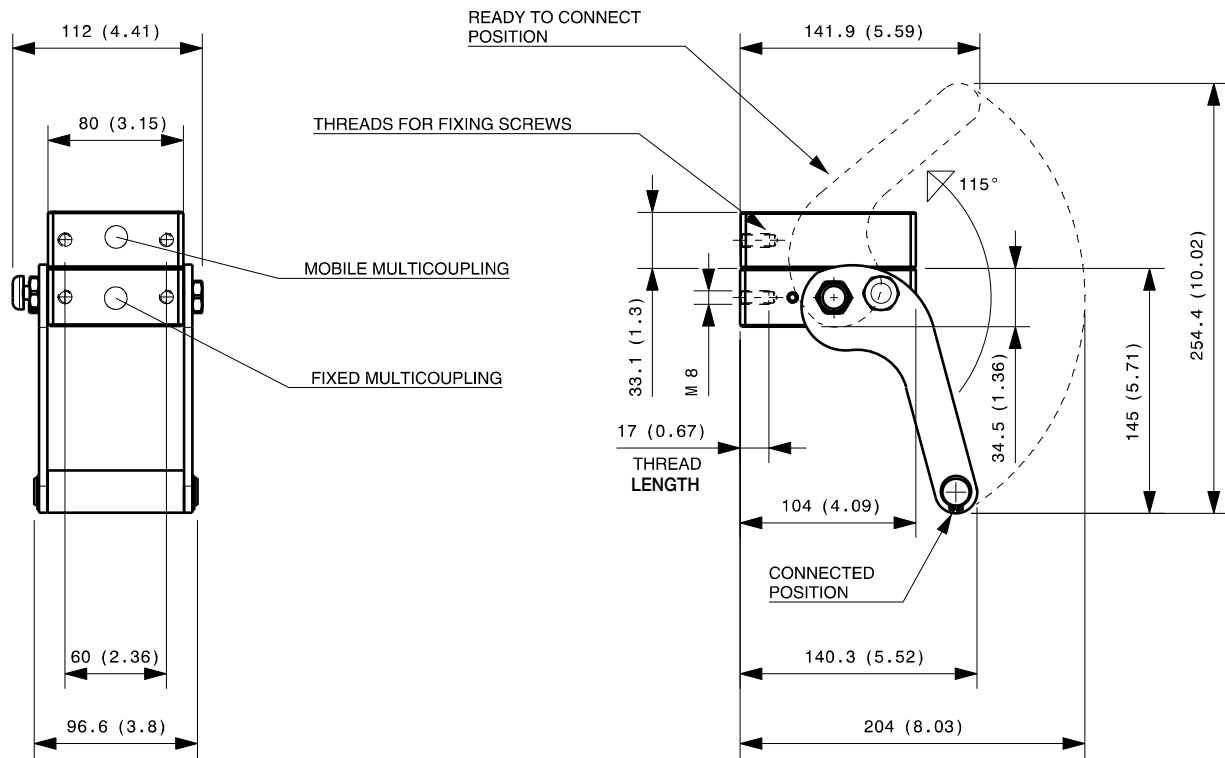
MultiCoupling (couplings included)		
Code	Name	Description
870009014	MULTI COMPLETE DP2 1A-1B	1 FAP9D 3/8 BSP - 1 FAP13 1/2 BSP - CAP
870009114	MULTI FIX DP2 1A-1B	1 FAP9D 3/8 BSP - 1 FAP13 1/2 BSP
870009214	MULTI MOBILE DP2 1A-1B	1 FAP9D 3/8 BSP - 1 FAP13 1/2 BSP

MultiCoupling spare parts (couplings not included)	
Code	Name
806000354	MULTI FIX EMPTY DP2 1A-1B
806000355	MULTI MOBILE EMPTY DP2 1A-1B
815606268	CAP FIX MULTICOUPLING DP 104x80
815606269	PARKING STATION MOBILE MULTICOUPLING DP 104x80
815701086	SPARE KIT LEVER GROUP DP 130x97

Custom configurations available upon request

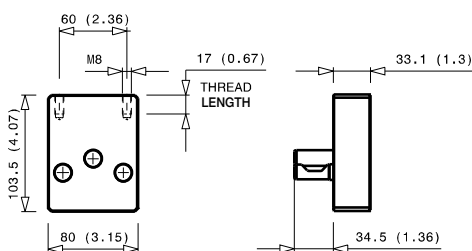
Fixed and mobile multicoupling

1,5 Kg and 0,8 Kg

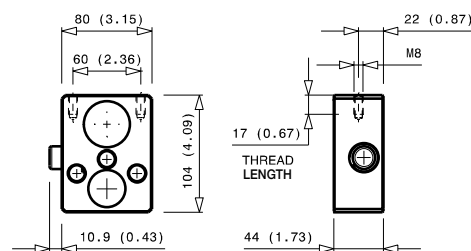


Dimensions in millimeters (inch)

Cap for fixed multicoupling 0,8 Kg



Parking station for mobile multicoupling 0,8 Kg

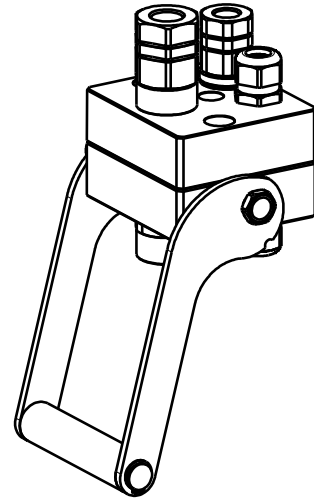


DP3 1A-1B-1EC

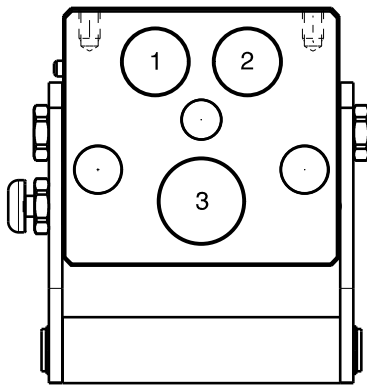


Previous description	Max. Resistance	FAP9 (A)	FAP13 (B)	FAP15 (C)	FAP17 (D)	FAP21 (E)
Body size		3/8"	1/2"	5/8"	3/4"	1"
DPT3ZN	10000 N	1 D	1			

DRAWING



CONFIGURATIONS



Possible configurations		
Pos	Coupling size	Predisposition for electrical connector
1	FAP9DZN	-
2	-	YES
3	FAP13ZN	-

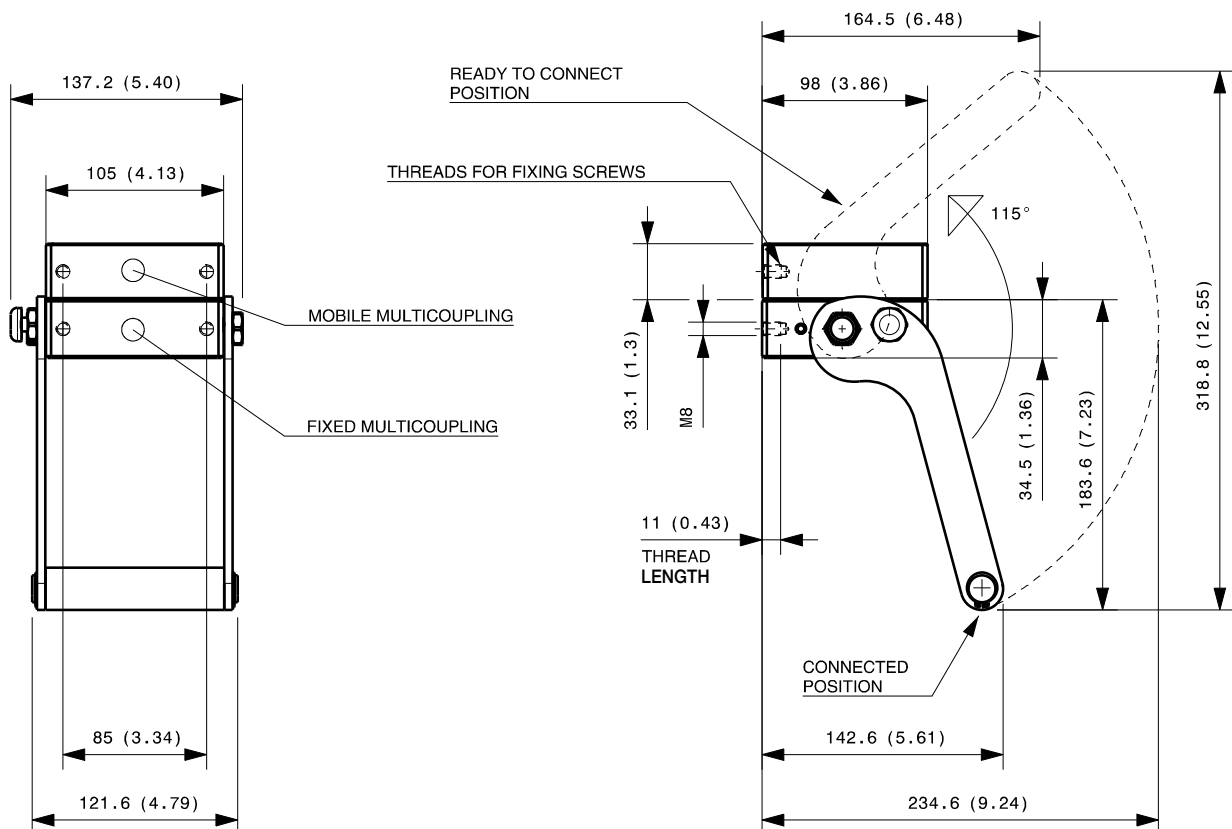
MultiCoupling (couplings included)		
Code	Name	Description
870009015	MULTI COMPLETE DP3 1A-1B-1EC	1 FAP9D 3/8 BSP - 1 FAP13 1/2 BSP - 1EC4 - CAP
870009115	MULTI FIX DP3 1A-1B-1EC	1 FAP9D 3/8 BSP - 1 FAP13 1/2 BSP - 1EC4
870009215	MULTI MOBILE DP3 1A-1B-1EC	1 FAP9D 3/8 BSP - 1 FAP13 1/2 BSP - 1EC4

MultiCoupling spare parts (couplings not included)	
Code	Name
806000356	MULTI FIX EMPTY DP3 1A-1B-1EC
806000357	MULTI MOBILE EMPTY DP3 1A-1B-1EC
815606276	CAP FIX MULTICOUPLING DP 105x98
815606277	PARKING STATION MOBILE MULTICOUPLING DP 105x98
815701081	SPARE KIT LEVER GROUP DP 170x121

Custom configurations available upon request

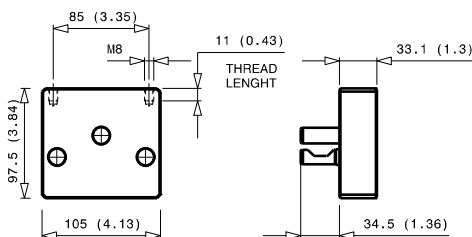
Fixed and mobile multicoupling

1,5 Kg and 0,8 Kg

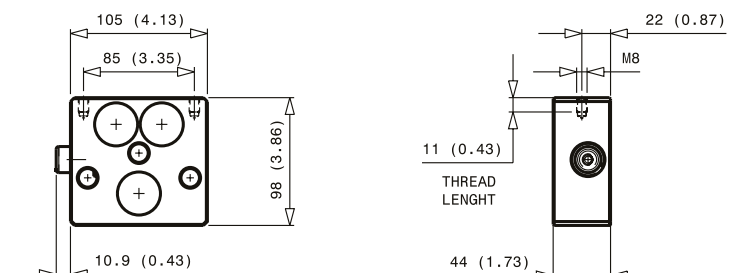


Dimensions in millimeters (inch)

Cap for fixed multicoupling 0,8 Kg



Parking station for mobile multicoupling 3,3 Kg

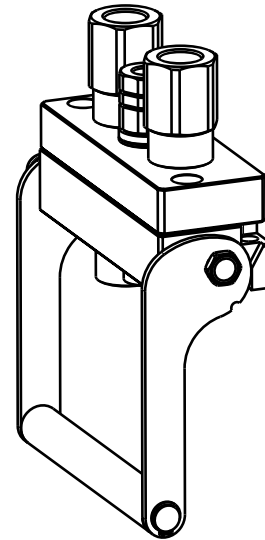


DP3 1A-2C-1EC V04



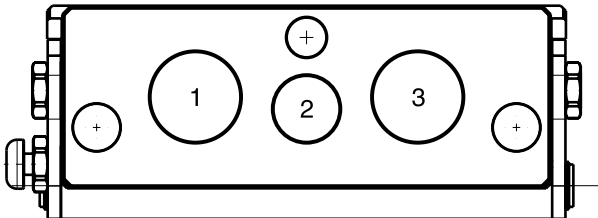
Previous description	Max. Resistance	FAP9 (A)	FAP13 (B)	FAP15 (C)	FAP17 (D)	FAP21 (E)
Body size	10000 N	3/8"	1/2"	5/8"	3/4"	1"
		1	D	2		

DRAWING



CONFIGURATIONS

Possible configurations		
Pos	Coupling size	Predisposition for electrical connector
1	FAP15	-
2	FAP9-D	YES
3	FAP15	-



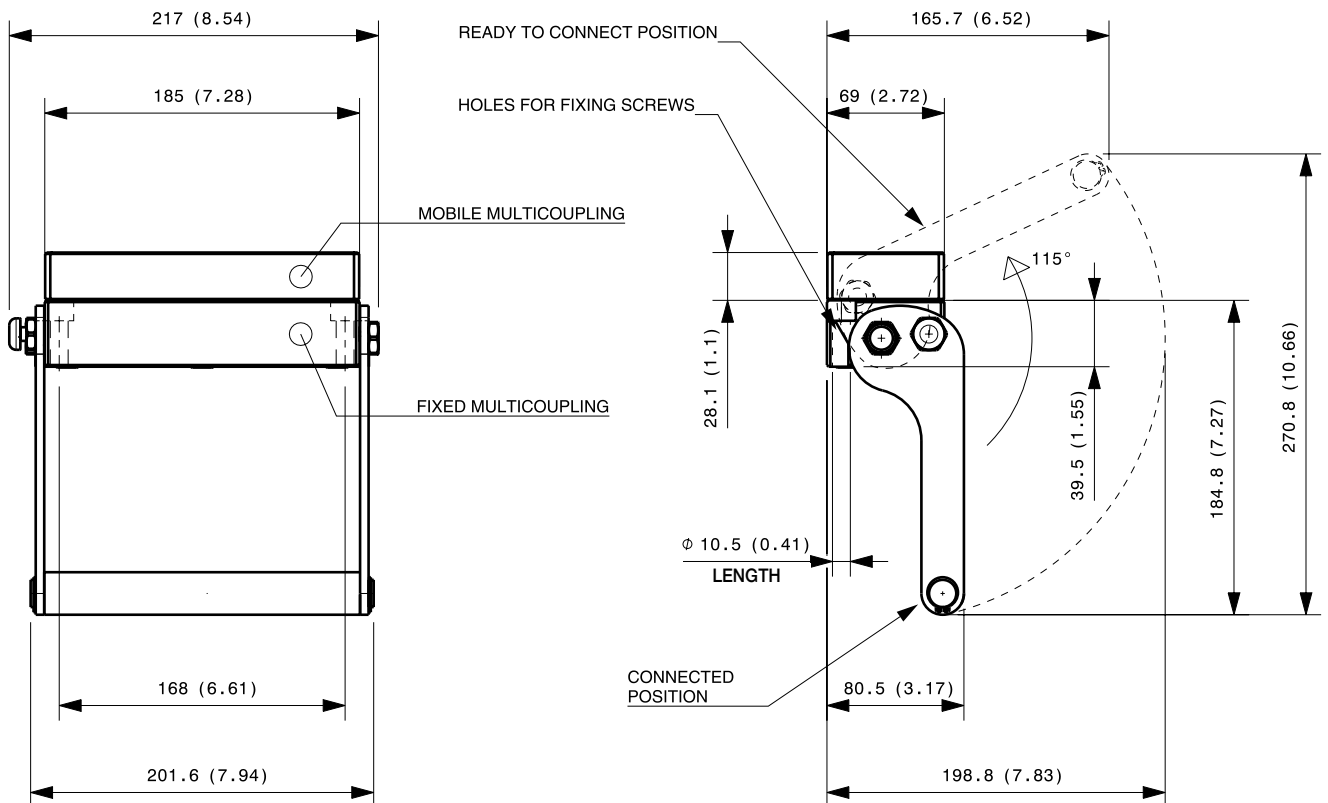
MultiCoupling (couplings included)		
Code	Name	Description
870008027	MULTI COMPLETE DP3 1A-2C V04	1 FAP9D 3/8 BSP - 2 FAP15 3/4 BSP - CAP
870008127	MULTI FIX DP3 1A-2C V04	1 FAP9D 3/8 BSP - 2 FAP15 3/4 BSP
870008130	MULTI FIX DP3 1A-2C V04	1 FAP9D 1/2 BSP - 2 FAP15 3/4 BSP
870008227	MULTI MOBILE DP3 1A-2C V04	1 FAP9D 3/8 BSP - 2 FAP15 3/4 BSP
870008230	MULTI MOBILE DP3 1A-2C V04	1 FAP9D 1/2 BSP - 2 FAP15 3/4 BSP

MultiCoupling spare parts (couplings not included)	
Code	Name
806000416	MULTI FIX EMPTY DP3 1A-2C-1EC V04
806000417	MULTI MOBILE EMPTY DP3 1A-2C-1EC V04
815606314	CAP FIX MULTICOUPLING DP 185x69
815606315	PARKING STATION MOBILE MULTICOUPLING DP 185x69

Custom configurations available upon request

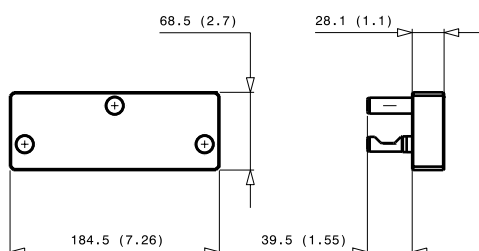
Fixed and mobile multicoupling

2,3 Kg and 0,9 Kg

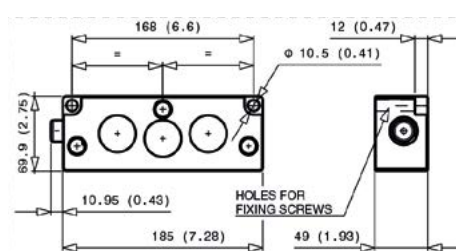


Dimensions in millimeters (inch)

Cap for fixed multicoupling 0,9 Kg



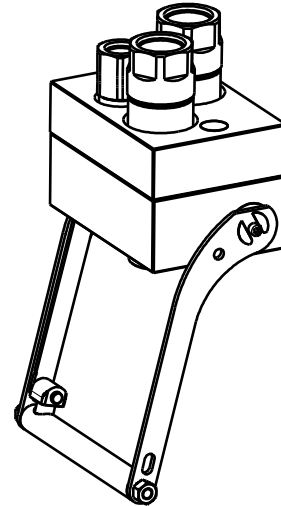
Parking station for mobile multicoupling 3,3 Kg



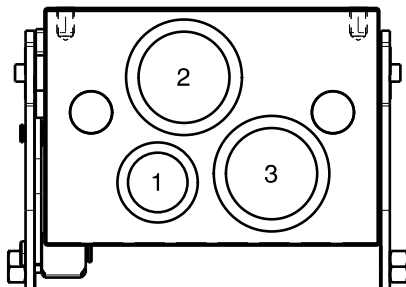
DP3 1C-2E

Previous description	Max. Resistance	FAP9 (A)	FAP13 (B)	FAP15 (C)	FAP17 (D)	FAP21 (E)
Body size		3/8"	1/2"	5/8"	3/4"	1"
DP3GE	23000 N			1		2

DRAWING



CONFIGURATIONS



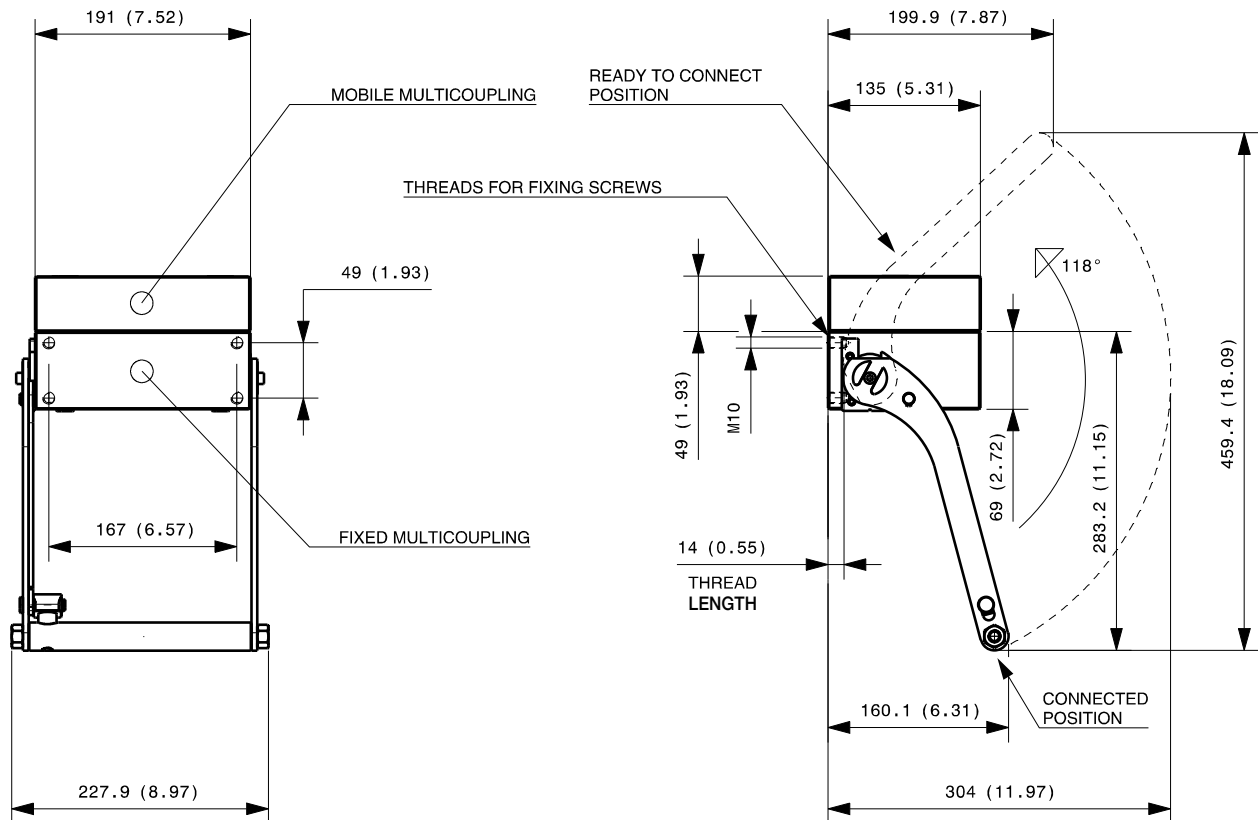
Possible configurations		
Pos	Coupling size	Predisposition for electrical connector
1	FAP15ZN	-
2	FAP21ZN	-
3	FAP21ZN	-

MultiCoupling (couplings included)		
Code	Name	Description
870015056	MULTI COMPLETE DP3 1C-2E	1 FAP15 3/4 BSP - 2 FAP21 1 BSP - CAP
870015088	MULTI COMPLETE DP3 1C-2E	1 FAP15 3/4 SAE - 2 FAP21 1-1/4 SAE - CAP
870016064	MULTI COMPLETE DP3 2E	1 FAP21 1 NPT - 1 FAP21 1-1/4 NPT - CAP
870015188	MULTI FIX DP3 1C-2E	1 FAP15 3/4 SAE - 2 FAP21 1-1/4 SAE
870015288	MULTI MOBILE DP3 1C-2E	1 FAP15 3/4 SAE - 2 FAP21 1-1/4 SAE

MultiCoupling spare parts (couplings not included)	
Code	Name
806000392	MULTI FIX EMPTY DP3 1C-2E
806000393	MULTI MOBILE EMPTY DP3 1C-2E
815606300	CAP FIX MULTICOUPLING DP 191x135
815606301	PARKING STATION MOBILE MULTICOUPLING DP 190x140
815701089	SPARE KIT LEVER GROUP DP 250x228

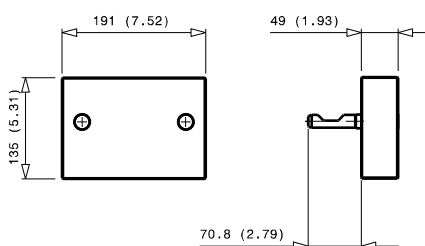
Fixed and mobile multicoupling

5,3 Kg and 2,8 Kg

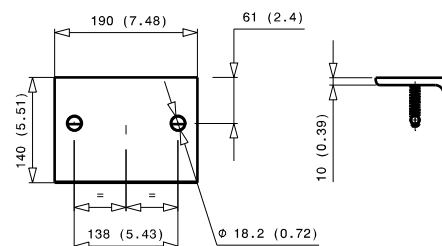


Dimensions in millimeters (inch)

Cap for fixed multicoupling 3,3 Kg



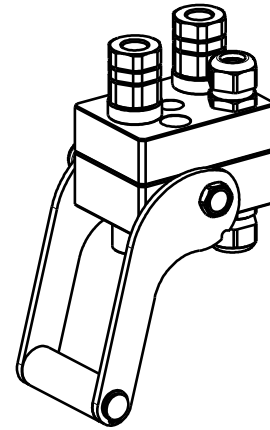
Parking station for mobile multicoupling 3,3 Kg



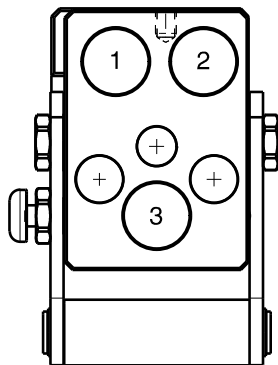
DP3 2A-1EC

Previous description	Max. Resistance	FAP9 (A)	FAP13 (B)	FAP15 (C)	FAP17 (D)	FAP21 (E)
Body size		3/8"	1/2"	5/8"	3/4"	1"
DPJ3ZN	8000 N	2 A				

DRAWING



CONFIGURATIONS



Possible configurations		
Pos	Coupling size	Predisposition for electrical connector
1	FAP9AZN	-
2	-	YES
3	FAP9AZN	-

MultiCoupling (couplings included)		
Code	Name	Description
870009016	MULTI COMPLETE DP3 2A-1EC	2 FAP9A 3/8 BSP - 1EC6 - CAP
870009116	MULTI FIX DP3 2A-1EC	2 FAP9A 3/8 BSP - 1EC6
870009216	MULTI MOBILE DP3 2A-1EC	2 FAP9A 3/8 BSP - 1EC6

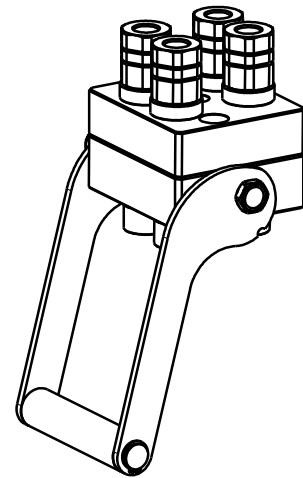
MultiCoupling spare parts (couplings not included)	
Code	Name
806000358	MULTI FIX EMPTY DP3 2A-1EC
806000359	MULTI MOBILE EMPTY DP3 2A-1EC
815606274	CAP FIX MULTICOUPLING DP 99x70
815606275	PARKING STATION MOBILE MULTICOUPLING DP 100x70
815701083	SPARE KIT LEVER GROUP DP 130x87

DP4 4A-2EC

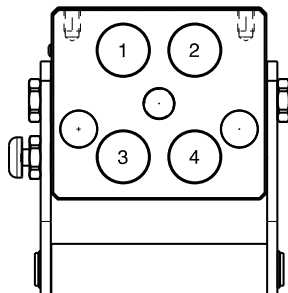


Previous description	Max. Resistance	FAP9 (A)	FAP13 (B)	FAP15 (C)	FAP17 (D)	FAP21 (E)
Body size		3/8"	1/2"	5/8"	3/4"	1"
DP4-9ZN	17000 N	4	A			

DRAWING



CONFIGURATIONS



Pos	Possible configurations	
	Coupling size	Predisposition for electrical connector
1	FAP9AZN	-
2	FAP9AZN	YES
3	FAP9AZN	YES
4	FAP9AZN	-

MultiCoupling (couplings included)		
Code	Name	Description
870011017	MULTI COMPLETE DP4 4A	4 FAP9A 3/8 BSP - CAP
870011020	MULTI COMPLETE DP4 4A	4 FAP9A 1/2 BSP - CAP
870011022	MULTI COMPLETE DP4 4A	4 FAP9A 1/4 BSP - CAP
870011027	MULTI COMPLETE DP4 4A	4 FAQ9A 3/8 BSP - CAP
870011028	MULTI COMPLETE DP4 4A	4 FAP9A 3/8 SAE - CAP
870011029	MULTI COMPLETE DP4 4A	4 FAP9A 1/2 NPT - CAP
870011117	MULTI FIX DP4 4A	4 FAP9A 3/8 BSP
870011120	MULTI FIX DP4 4A	4 FAP9A 1/2 BSP
870011122	MULTI FIX DP4 4A	4 FAP9A 1/4 BSP
870011125	MULTI FIX DP4 2A	2 FAP9A 3/8 BSP
870011126	MULTI FIX DP4 4A	4 FAP9A 1/2 SAE
870011217	MULTI MOBILE DP4 4A	4 FAP9A 3/8 BSP
870011220	MULTI MOBILE DP4 4A	4 FAP9A 1/2 BSP
870011222	MULTI MOBILE DP4 4A	4 FAP9A 1/4 BSP
870011229	MULTI MOBILE DP4 4A	4 FAP9A 1/2 NPT

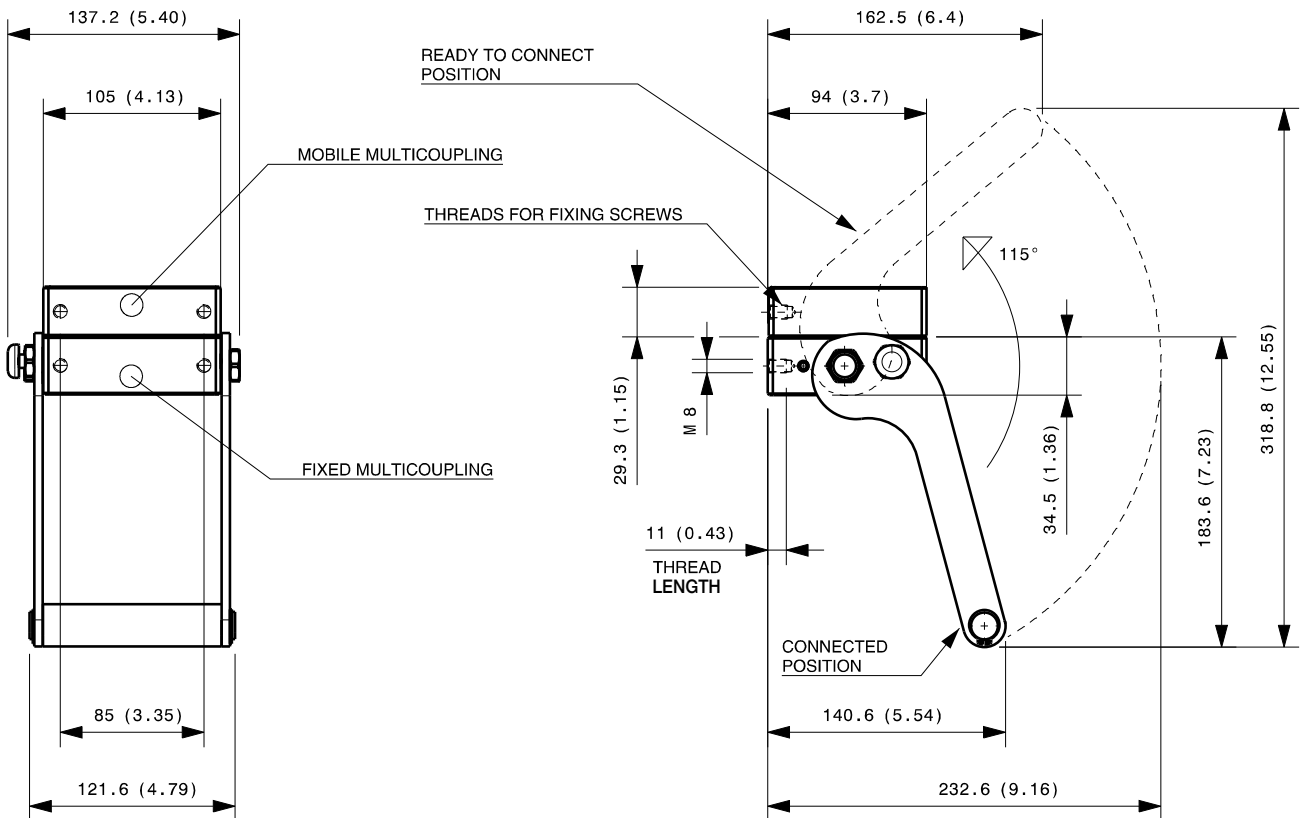
MultiCoupling spare parts (couplings not included)	
Code	Name
806000264	MULTI FIX EMPTY DP4 4A-2EC
806000370	MULTI FIX EMPTY DP4 4A V02*
806000265	MULTI MOBILE EMPTY DP4 4A-2EC
815606280	CAP FIX MULTICOUPLING DP 105x94
815606281	PARKING STATION MOBILE MULTICOUPLING DP 105x94
815701081	SPARE KIT LEVER GROUP DP 170x121
UPON REQUEST	SPECIFIC KIT FOR V02 MODEL

* V02 = side button

Custom configurations available upon request

Fixed and mobile multicoupling

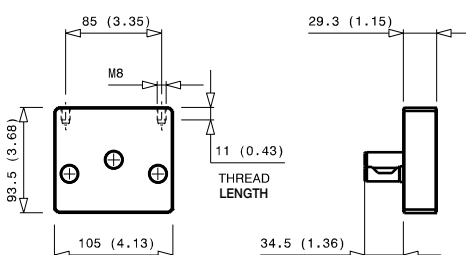
1,7 Kg and 0,7 Kg



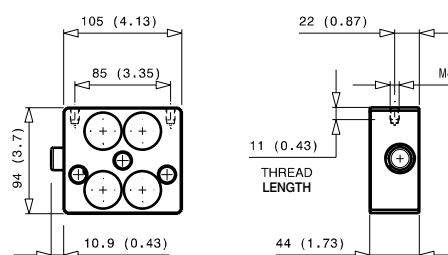
Available also model with button on the opposite side,
in case of need ask the drawing to info@stucchigroup.com.

Dimensions in millimeters (inch)

Cap for fixed multicoupling 0,7 Kg



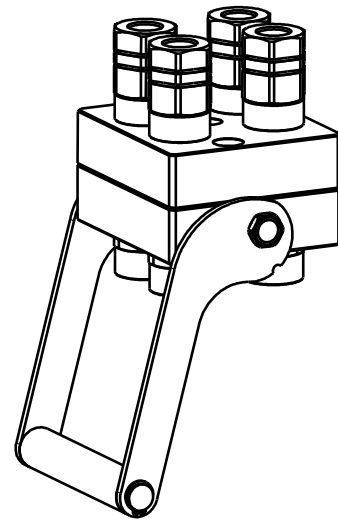
Parking station for mobile multicoupling 0,9 Kg



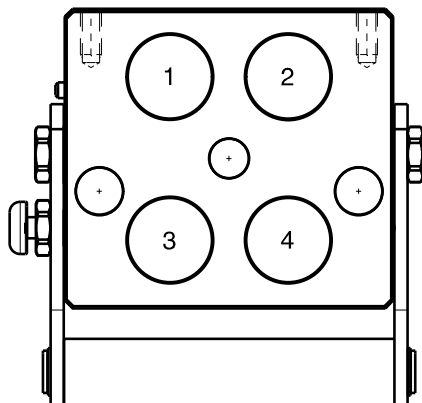
DP4 4B-2EC

Previous description	Max. Resistance	FAP9 (A)	FAP13 (B)	FAP15 (C)	FAP17 (D)	FAP21 (E)
Body size		3/8"	1/2"	5/8"	3/4"	1"
DP4-13ZN	17000 N		4			

DRAWING



CONFIGURATIONS



Possible configurations		
Pos	Coupling size	Predisposition for electrical connector
1	FAP13ZN	-
2	FAP13ZN	YES
3	FAP13ZN	YES
4	FAP13ZN	-

MultiCoupling (couplings included)

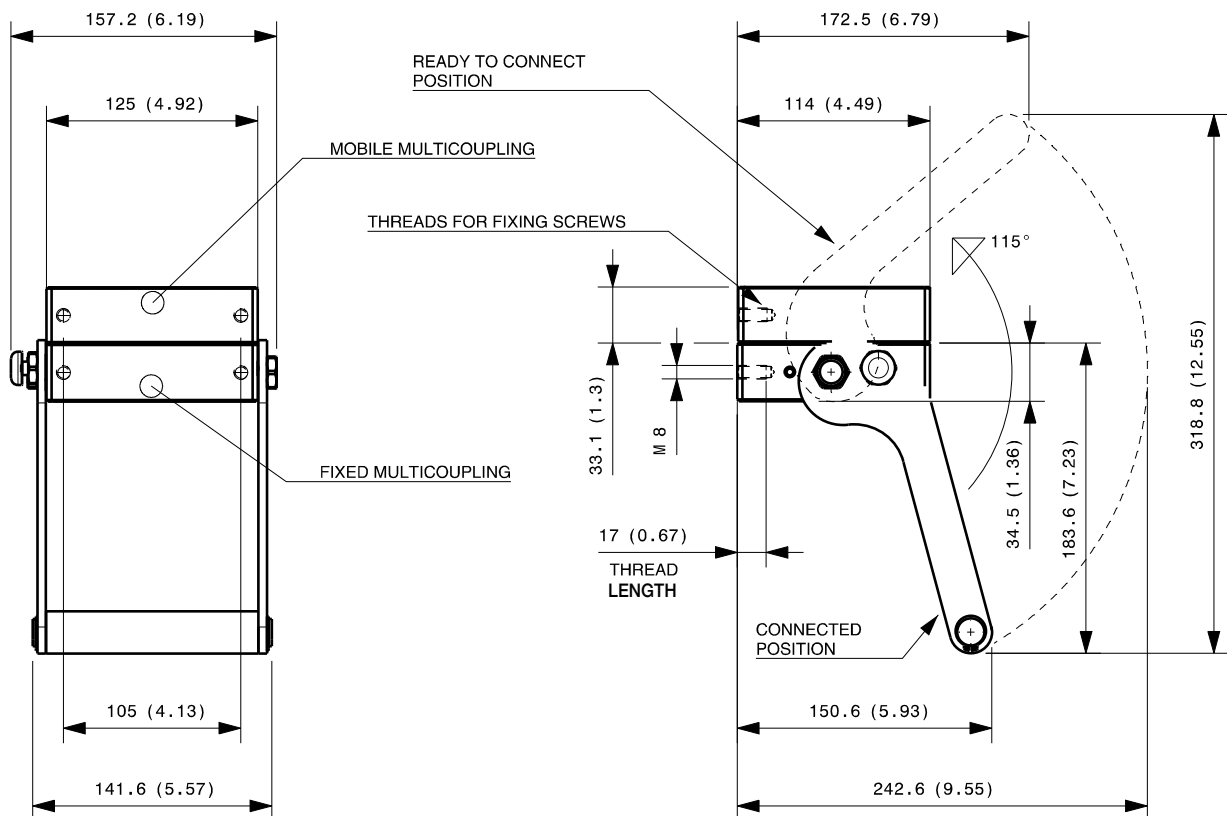
Code	Name	Description
870012007	MULTI COMPLETE DP4 4B	4 FAP13 3/4 BSP - CAP
870012008	MULTI COMPLETE DP4 4B	4 FAP13 1/2 BSP - CAP
870012009	MULTI COMPLETE DP4 4B	4 FAP13 1/2 NPT - CAP
870012107	MULTI FIX DP4 4B	4 FAP13 3/4 BSP
870012108	MULTI FIX DP4 4B	4 FAP13 1/2 BSP
870012109	MULTI FIX DP4 4B	4 FAP13 1/2 NPT
870012110	MULTI FIX DP4 2B 1EC	2 FAP13 1/2 BSP 1EC6
870012111	MULTI FIX DP4 2B	2 FAP13 1/2 BSP
870012207	MULTI MOBILE DP4 4B	4 FAP13 3/4 BSP
870012208	MULTI MOBILE DP4 4B	4 FAP13 1/2 BSP
870012209	MULTI MOBILE DP4 4B	4 FAP13 1/2 NPT
870012210	MULTI MOBILE DP4 2B 1EC	2 FAP13 1/2 BSP 1EC6

MultiCoupling spare parts (couplings not included)

Code	Name
806000350	MULTI FIX EMPTY DP4 4B-2EC
806000351	MULTI MOBILE EMPTY DP4 4B-2EC
815606282	CAP FIX MULTICOUPLING DP 125x114
815606283	PARKING STATION MOBILE MULTICOUPLING DP 125x114
815701085	SPARE KIT LEVER GROUP DP 170x142

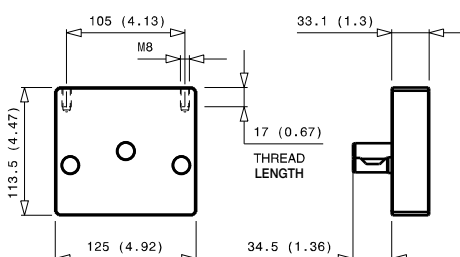
Fixed and mobile multicoupling

2,0 Kg and 1,0 Kg

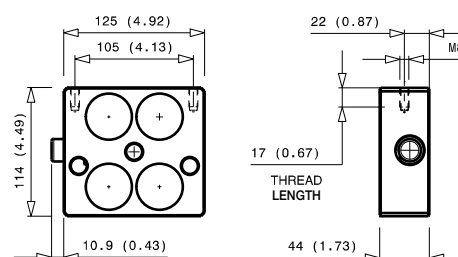


Dimensions in millimeters (inch)

Cap for fixed multicoupling 1,0 Kg



Parking station for mobile multicoupling 1,2 Kg

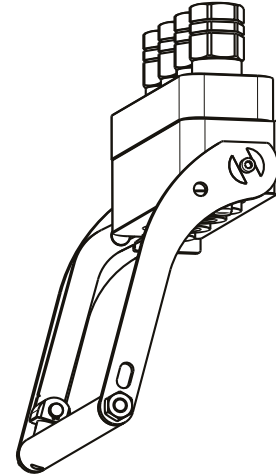


DP4 4B-1EC V01

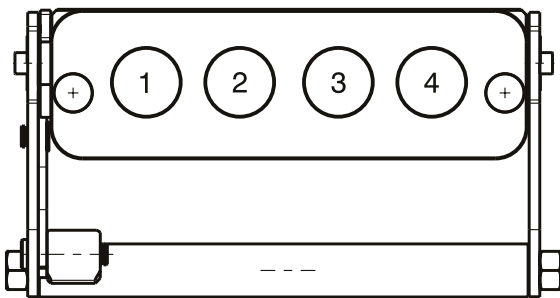


Previous description	Max. Resistance	FAP9 (A)	FAP13 (B)	FAP15 (C)	FAP17 (D)	FAP21 (E)
Body size	13000 N	3/8"	1/2"	5/8"	3/4"	1"

DRAWING



CONFIGURATIONS



Possible configurations		
Pos	Coupling size	Predisposition for electrical connector
1	FAP13	YES
2	FAP13	-
3	FAP13	-
4	FAP13	-

MultiCoupling (couplings included)

Code	Name	Description
870012012	MULTI COMPLETE DP4 4B-1EC V01	4 FAP13 1/2 BSP - CAP

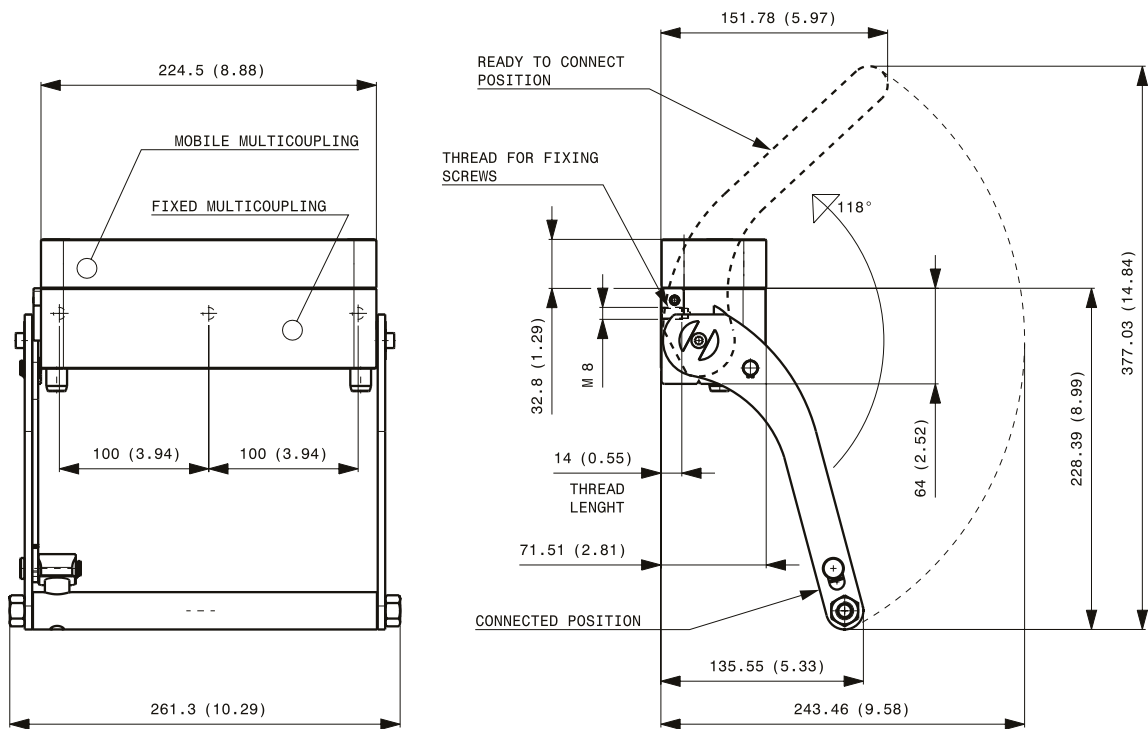
MultiCoupling spare parts (couplings not included)

Code	Name
806000434	MULTI FIX EMPTY DP4 4B-1EC V01
806000435	MULTI MOBILE EMPTY DP4 4B-1EC V01
815606325	CAP FIX MULTICOUPLING DP4 4B V01 225X70
815606326	PARKING STATION MOBILE MULTICOUPLING DP4 4B V01
815701311	SPARE KIT LEVER GROUP DP 200x261

Custom configurations available upon request

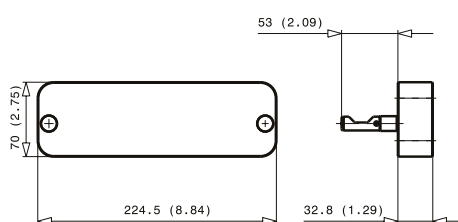
Fixed and mobile multicoupling

3,4 Kg and 1,2 Kg

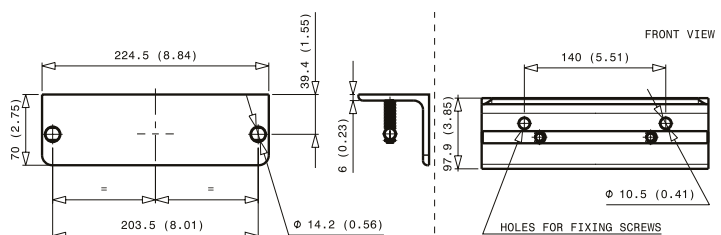


Dimensions in millimeters (inch)

Cap for fixed multicoupling 1,2 Kg



Parking station for mobile multicoupling 1,6 Kg

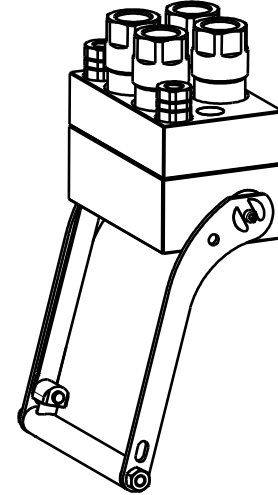


DP6 2A-4D-2EC

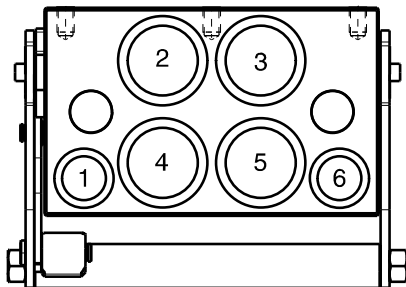


Previous description	Max. Resistance	FAP9 (A)	FAP13 (B)	FAP15 (C)	FAP17 (D)	FAP21 (E)
Body size		3/8"	1/2"	5/8"	3/4"	1"
DP6AD	23000 N	2	D		4	

DRAWING



CONFIGURATIONS



Possible configurations		
Pos	Coupling size	Predisposition for electrical connector
1	FAP9DZN	YES *
2	FAP17ZN	-
3	FAP17ZN	-
4	FAP17ZN	-
5	FAP17ZN	-
6	FAP9DZN	YES *

* - Maximum hose diameter for FAP9: Ø16 (1.33), in case of bigger hose use a longer adaptor.

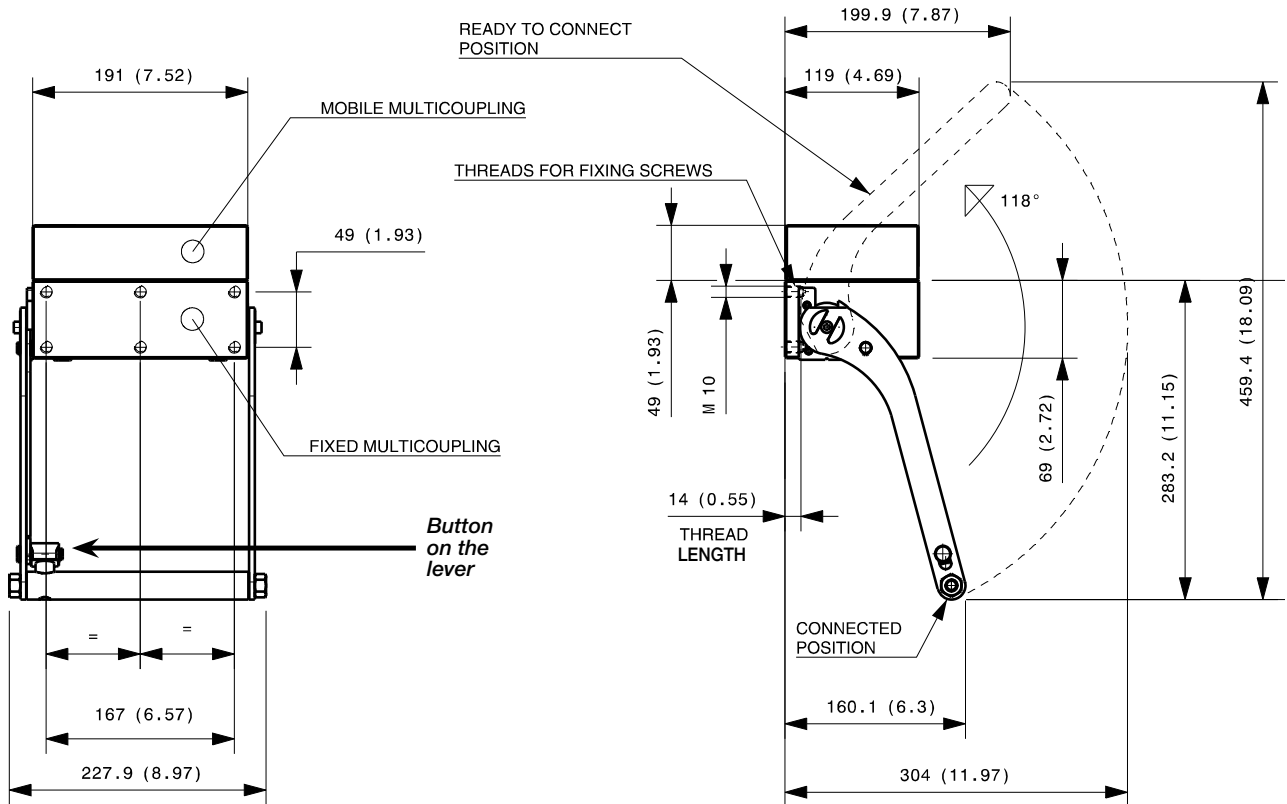
MultiCoupling (couplings included)		
Code	Name	Description
870008023	MULTI COMPLETE DP6 2A-4D	2 FAP9D 3/8 BSP - 4 FAP17 1 BSP - CAP
870008028	MULTI COMPLETE DP6 4D	4 FAP17 1 BSP - CAP
870008123	MULTI FIX DP6 2A-4D	2 FAP9D 3/8 BSP - 4 FAP17 1 BSP
870008128	MULTI FIX DP6 4D	4 FAP17 1 BSP - CAP
870008223	MULTI MOBILE DP6 2A-4D	2 FAP9D 3/8 BSP - 4 FAP17 1 BSP
870008228	MULTI MOBILE DP6 4D	4 FAP17 1 BSP - CAP

MultiCoupling spare parts (couplings not included)		
Code	Name	Description
806000382	MULTI FIX EMPTY DP6 2A-4D-2EC	
806000383	MULTI MOBILE EMPTY DP6 2A-4D-2EC	
815606290	CAP FIX MULTICOUPLING DP 191x118	
815606291	PARKING STATION MOBILE MULTICOUPLING DP 190x120	
815701089	SPARE KIT LEVER GROUP DP 250x228	

Custom configurations available upon request

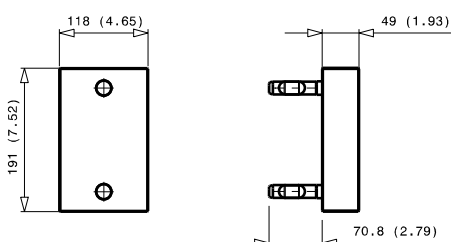
Fixed and mobile multicoupling

4,5 Kg and 2,2 Kg



Dimensions in millimeters (inch)

Cap for fixed multicoupling 2,8 Kg



Parking station for mobile multicoupling 2,5 Kg

